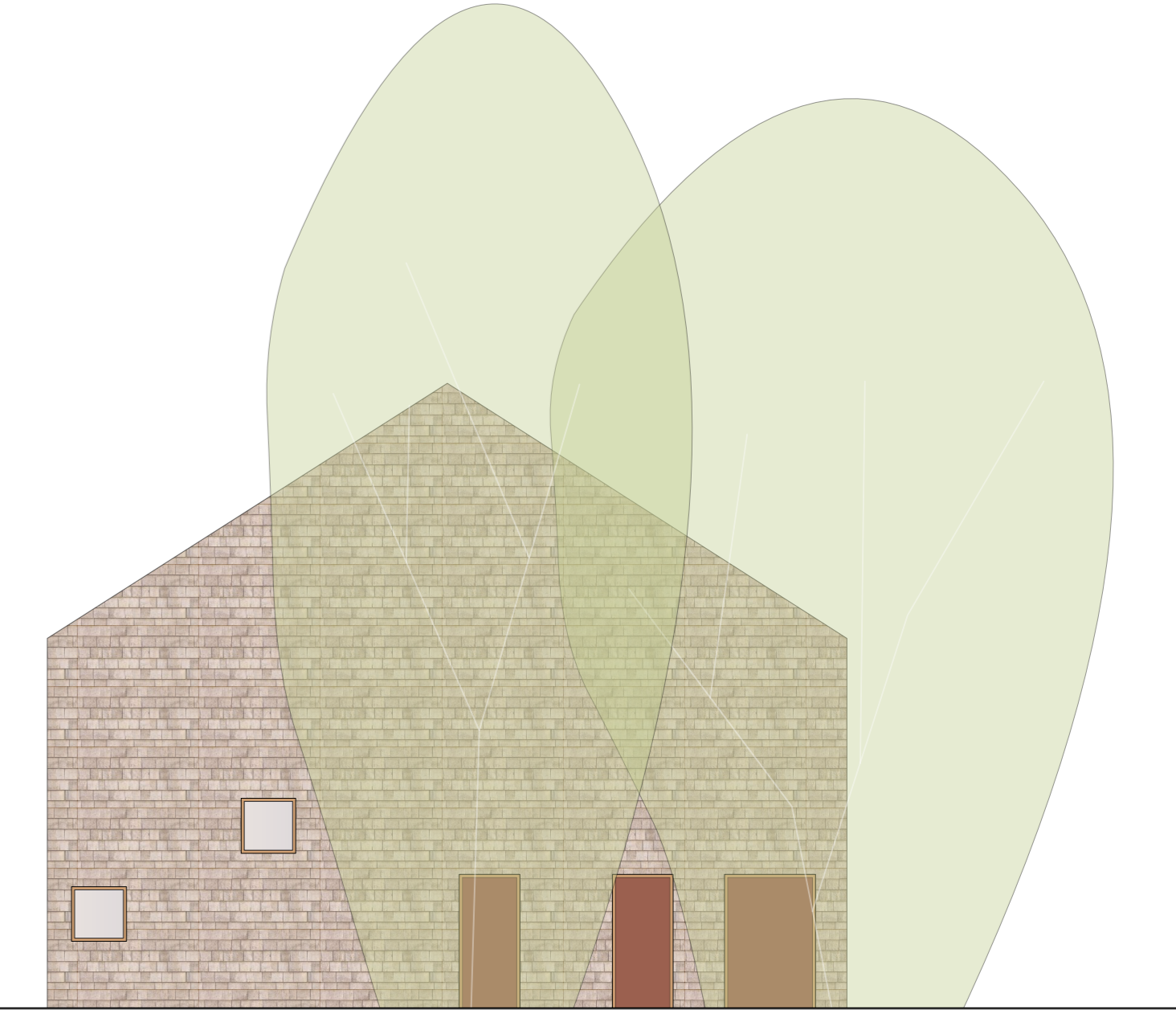
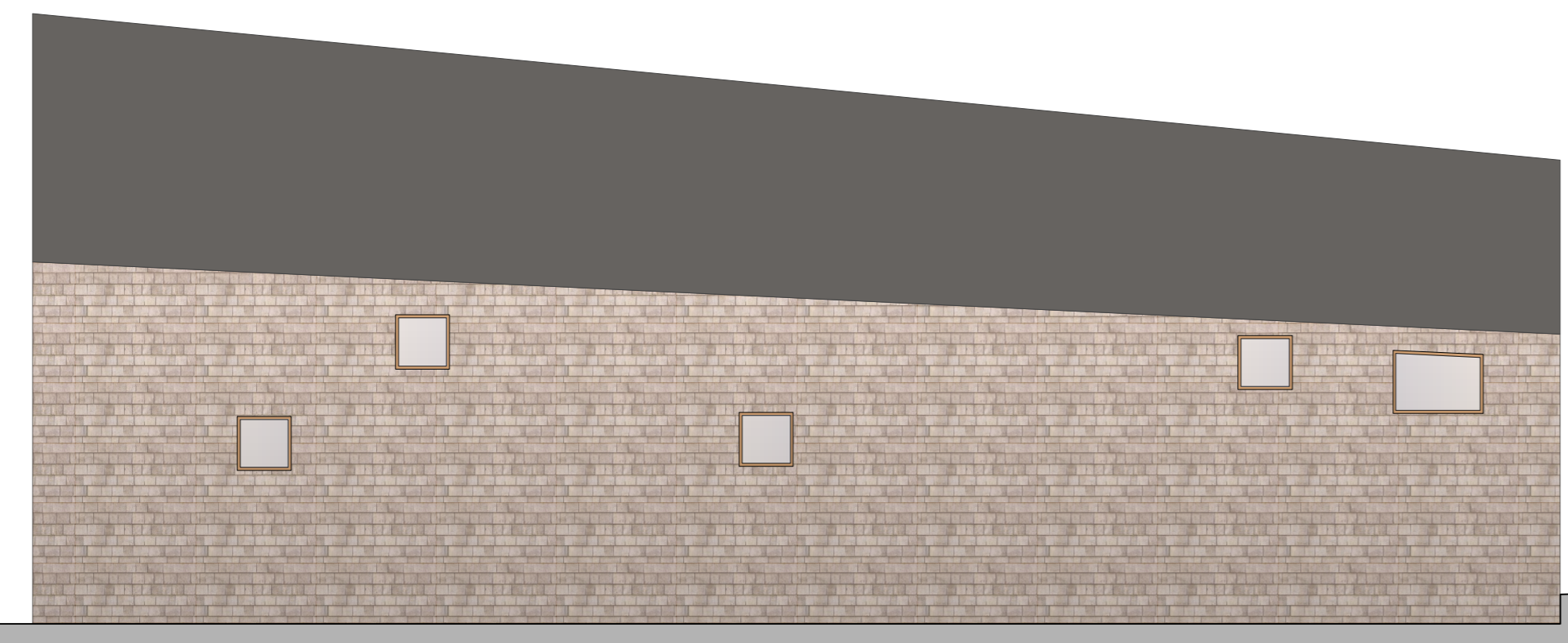
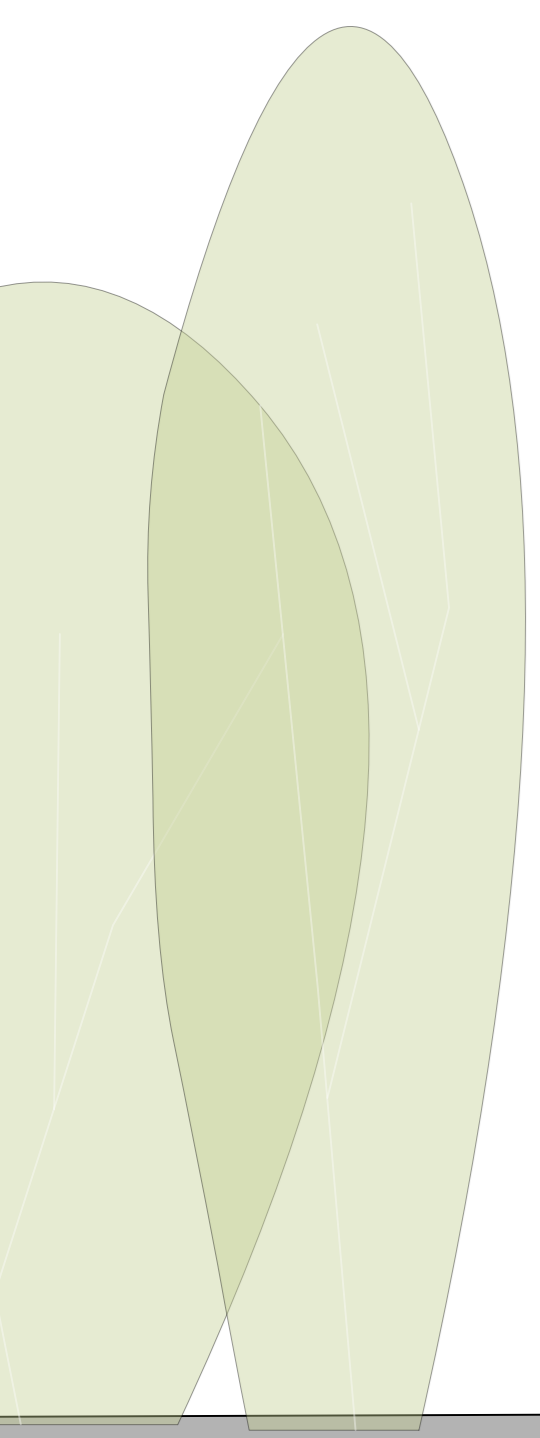


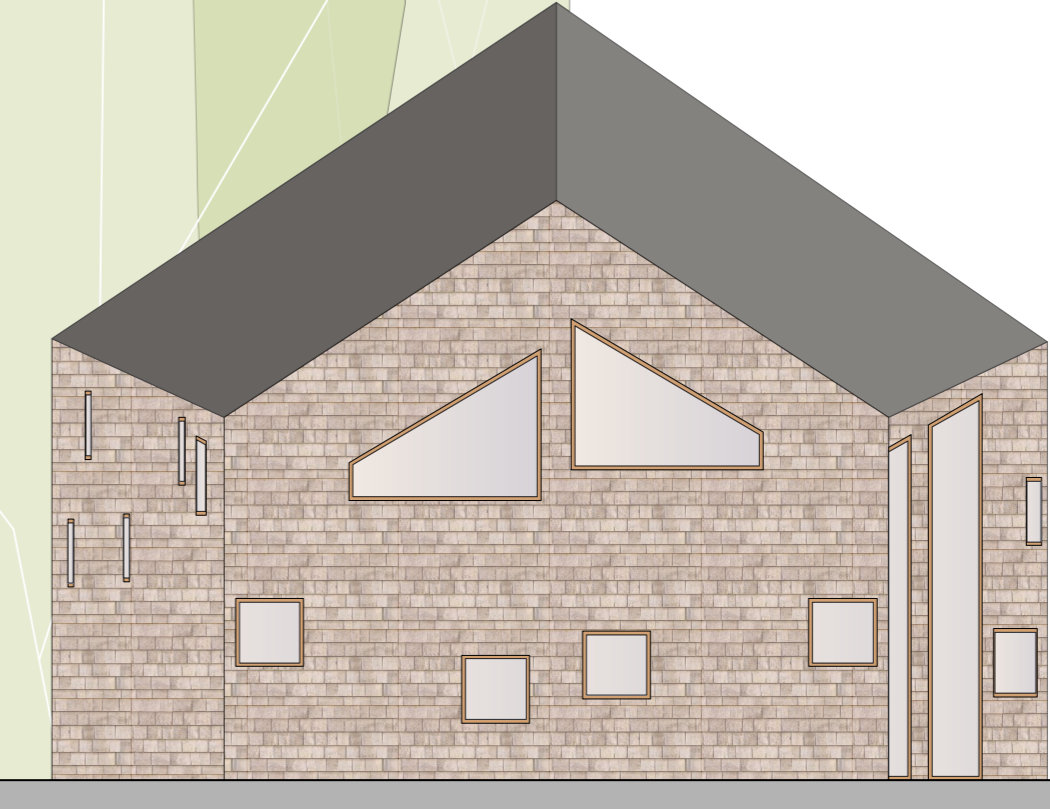
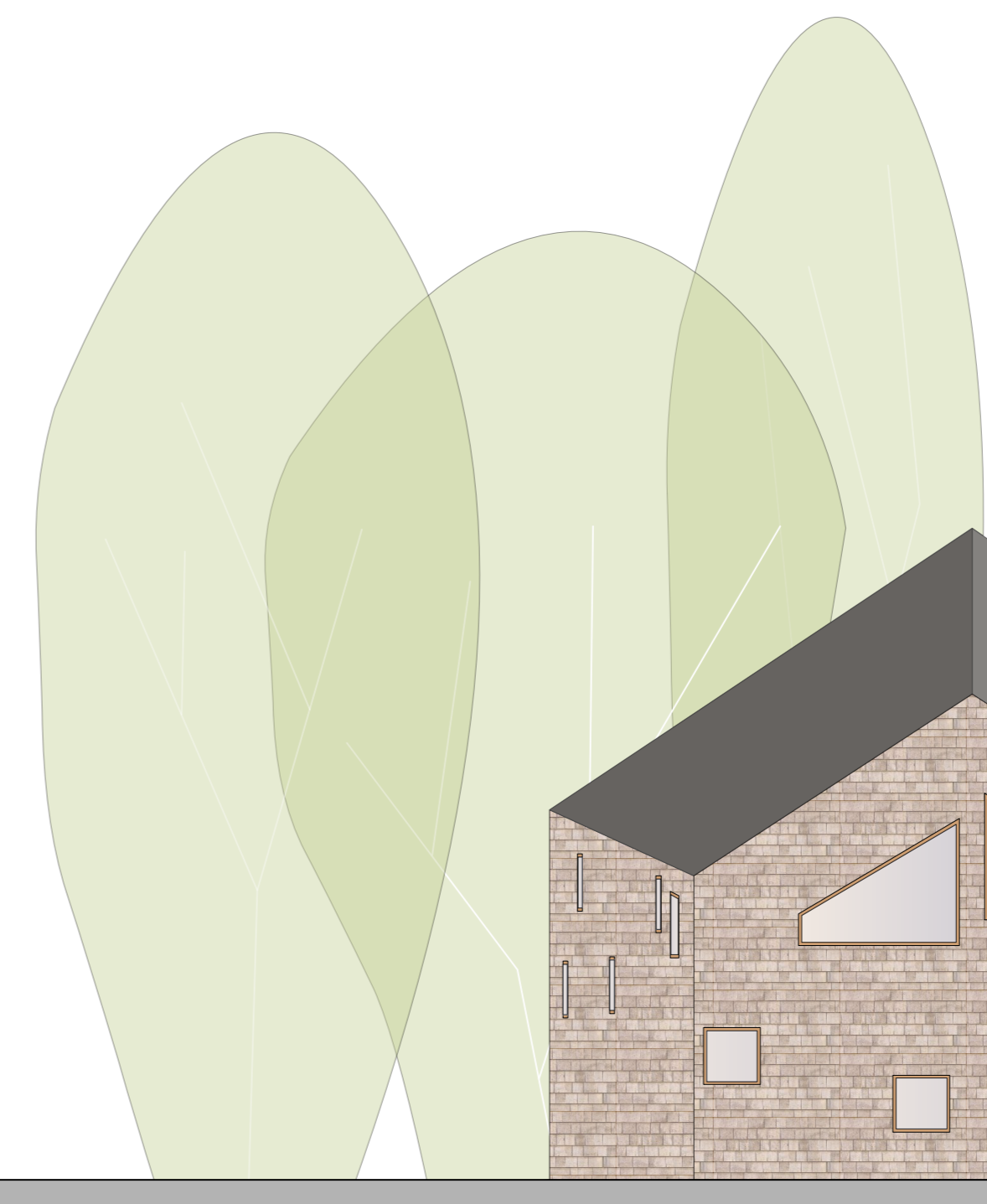
South elevation
1:100



East elevation
1:100



North elevation
1:100



West elevation
1:100

Rev	Issue Date	Amendment

HOOPERS ARCHITECTS

Hoopers Architects
5 Cromwell Court
St Peter's Street
Ipswich
IP1 1XG
T: 01473 212646
www.hoopersarchitects.co.uk

Project
**Melton Village Hall,
Melton**

Client
Melton Parish Council

Drawing
Elevations

Scale	Date	Job-Dwg-Rev No
1:100@A1	01/17	3772-SK8

File	Drawn	Checked	Stage
3772 Village Hall	CJ		Feasibility