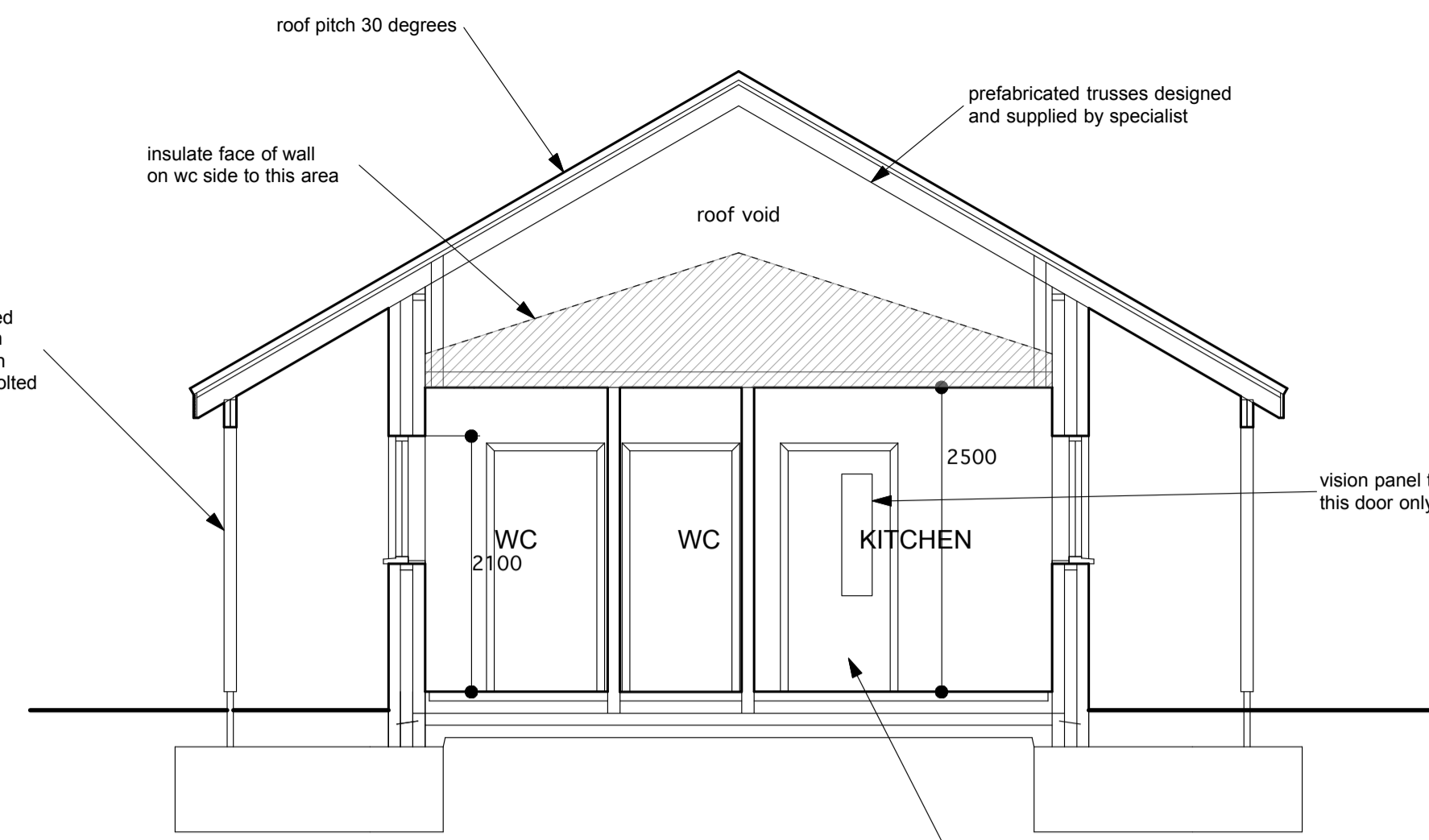
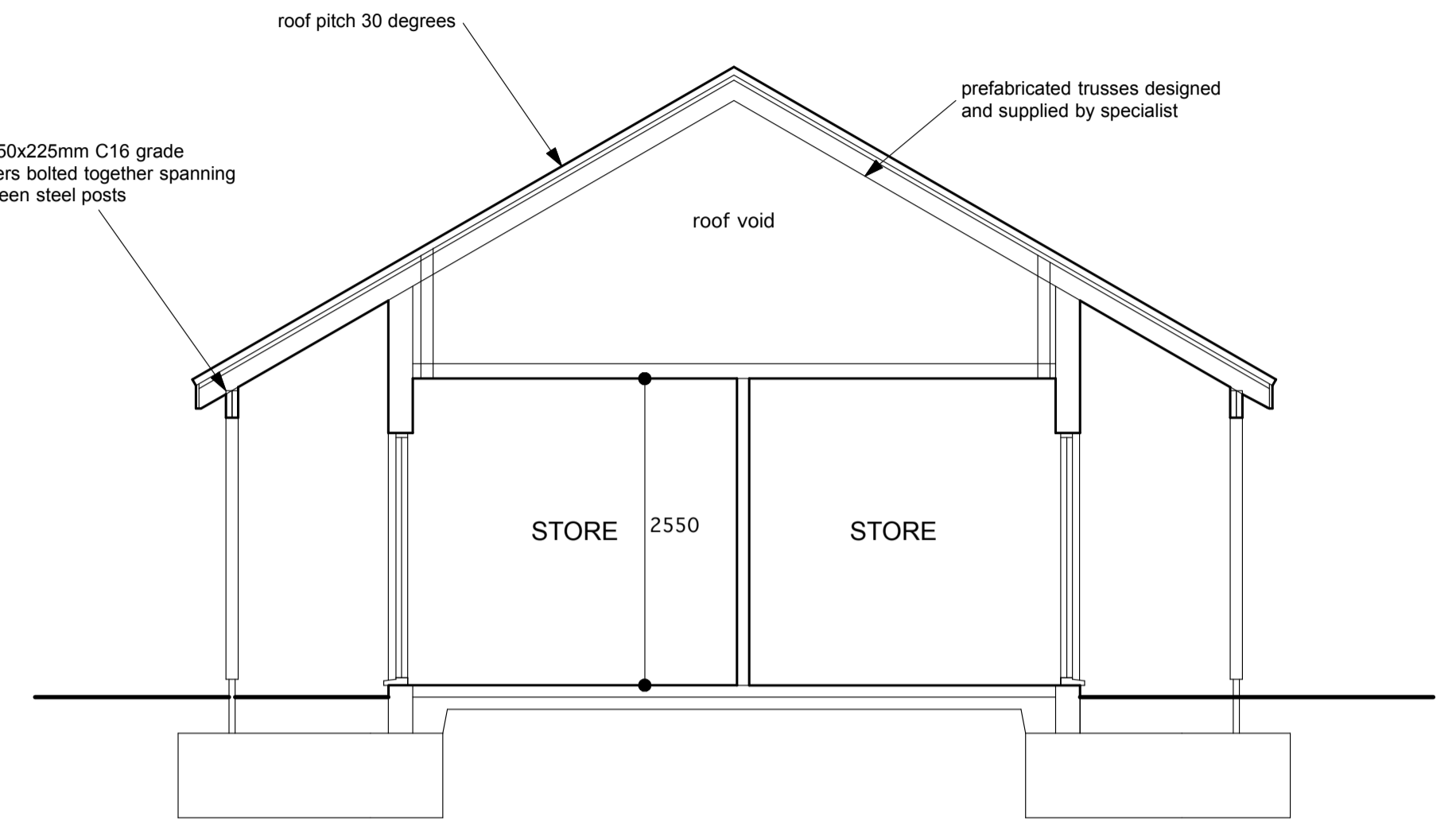


SECTION THROUGH MEETING ROOM

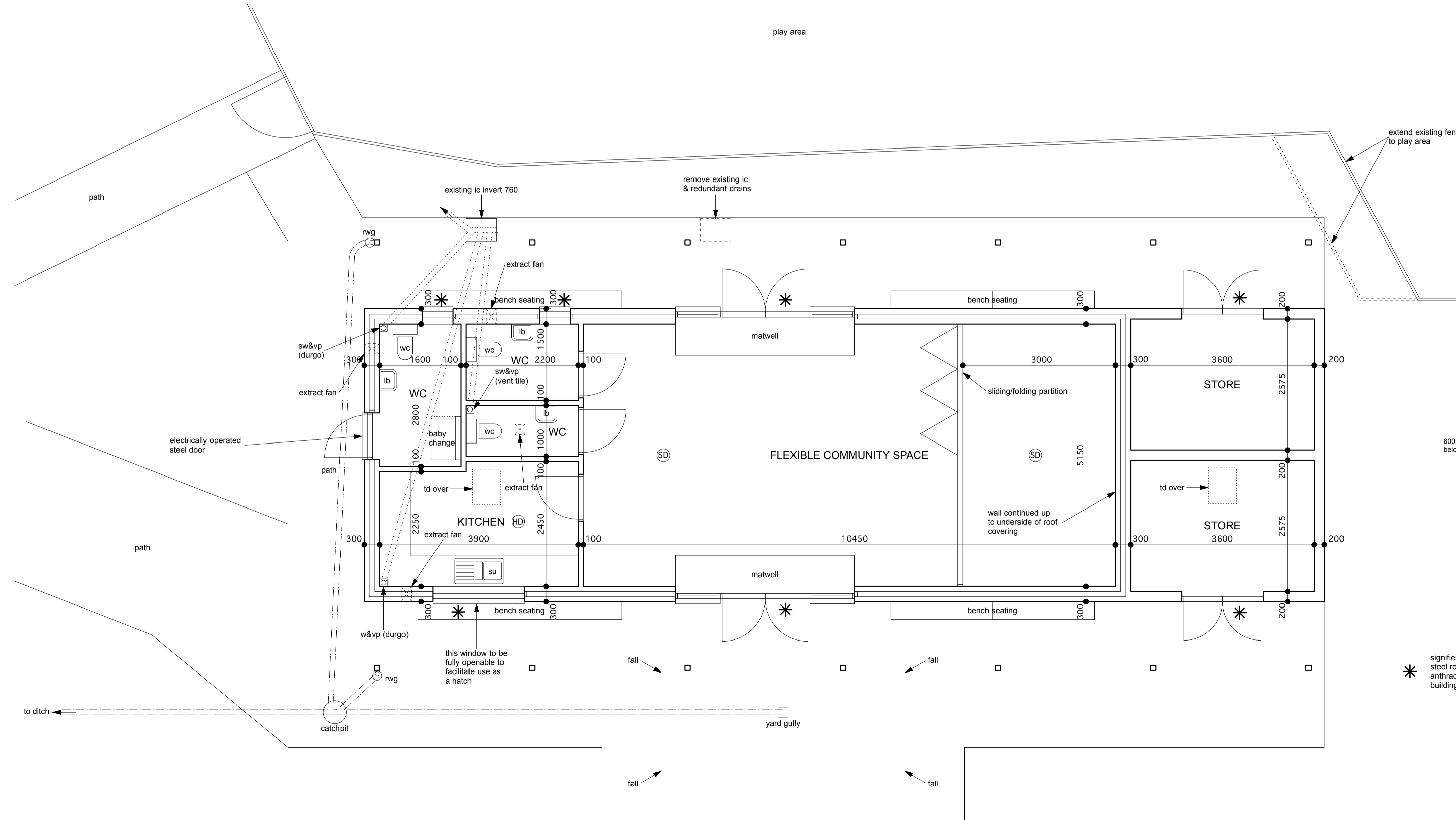


SECTION THROUGH KITCHEN & WC'S



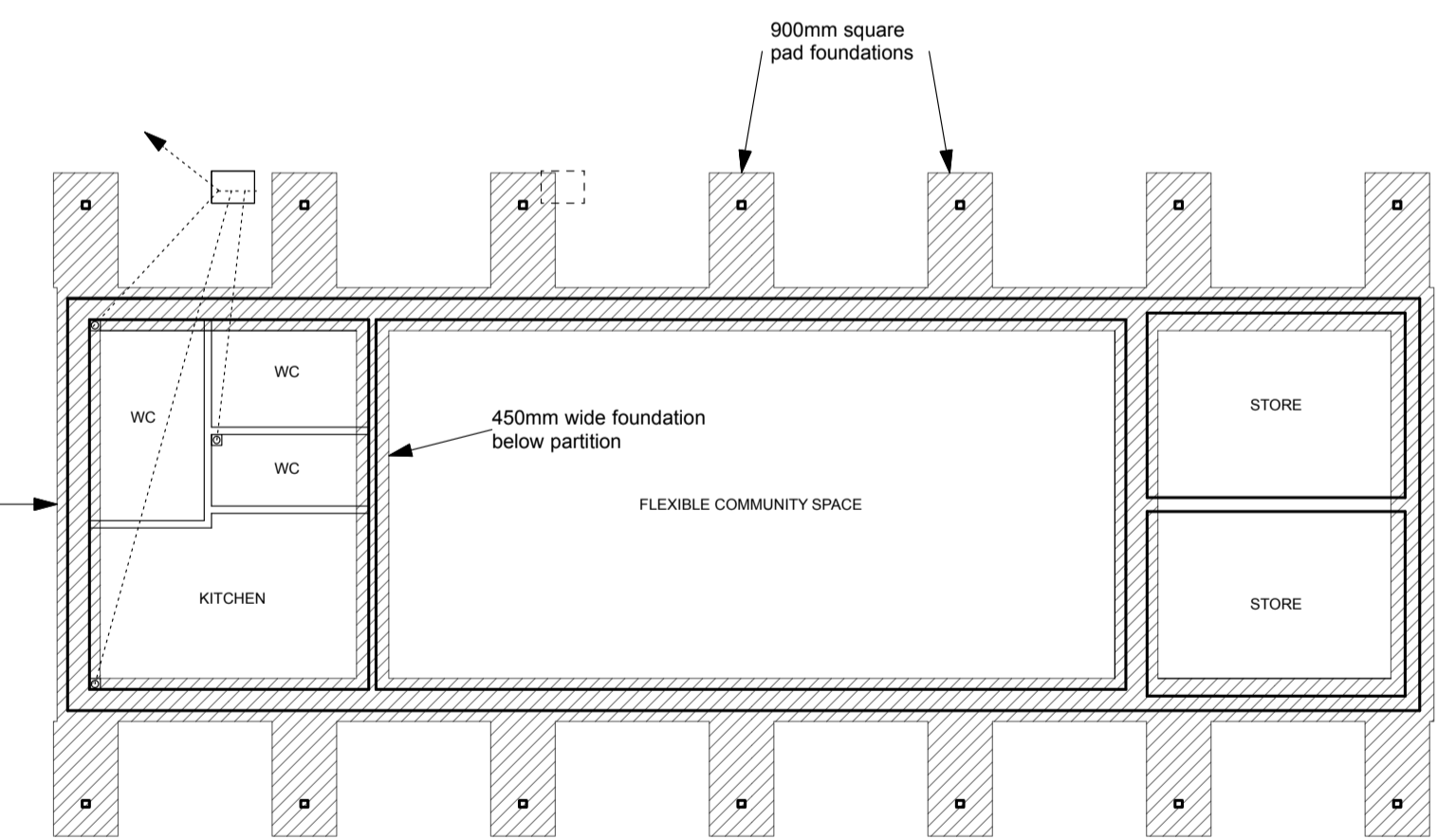
SECTION THROUGH STORES

- NOTES:
- THIS DRAWING is copyright 2021 Mullins Dowse Architects
  - SETTING OUT all dimensions to structural faces
  - SETTING OUT confirm all dimensions on site
  - DIMENSIONS OF JOINERY components show actual joinery sizes: the builder must allow tolerances for building in, fitting and jointing
  - CONFIRM DIMENSIONS on site for all components prior to manufacture
  - REPORT all discrepancies to the clients/architects and obtain their instructions/advice before proceeding
  - READ THIS DRAWING in conjunction with the relevant structural engineers drawings
  - READ THIS DRAWING in conjunction with the construction notes

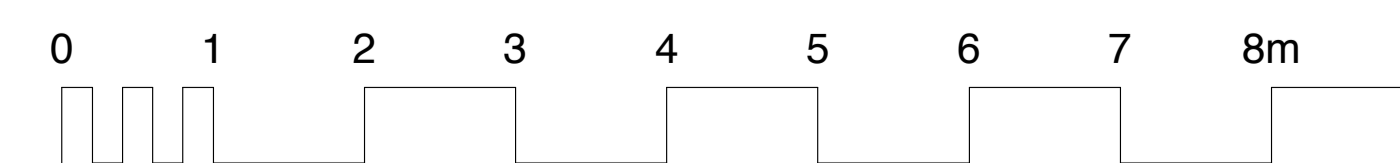


PLAN

\* signifies electrically operated steel roller shutter finished anthracite grey for use when building is not in use



1:100 FOUNDATION PLAN



revision	date	description	drawn	checked

project Replacement Pavilion At Melton Playing Field, Melton Road, Melton, Woodbridge IP12 1NH.

drawing Working Drawing Detail Plan, Sections & Foundation Plan

date September 2021 scale 1:50 & 1:100 @ A1 drawn AW checked AW

job ref drawing revision

6261 3



10A Quay Street, Woodbridge, Suffolk, IP12 1BX  
01394 382544  
www.mullinsdowse.co.uk