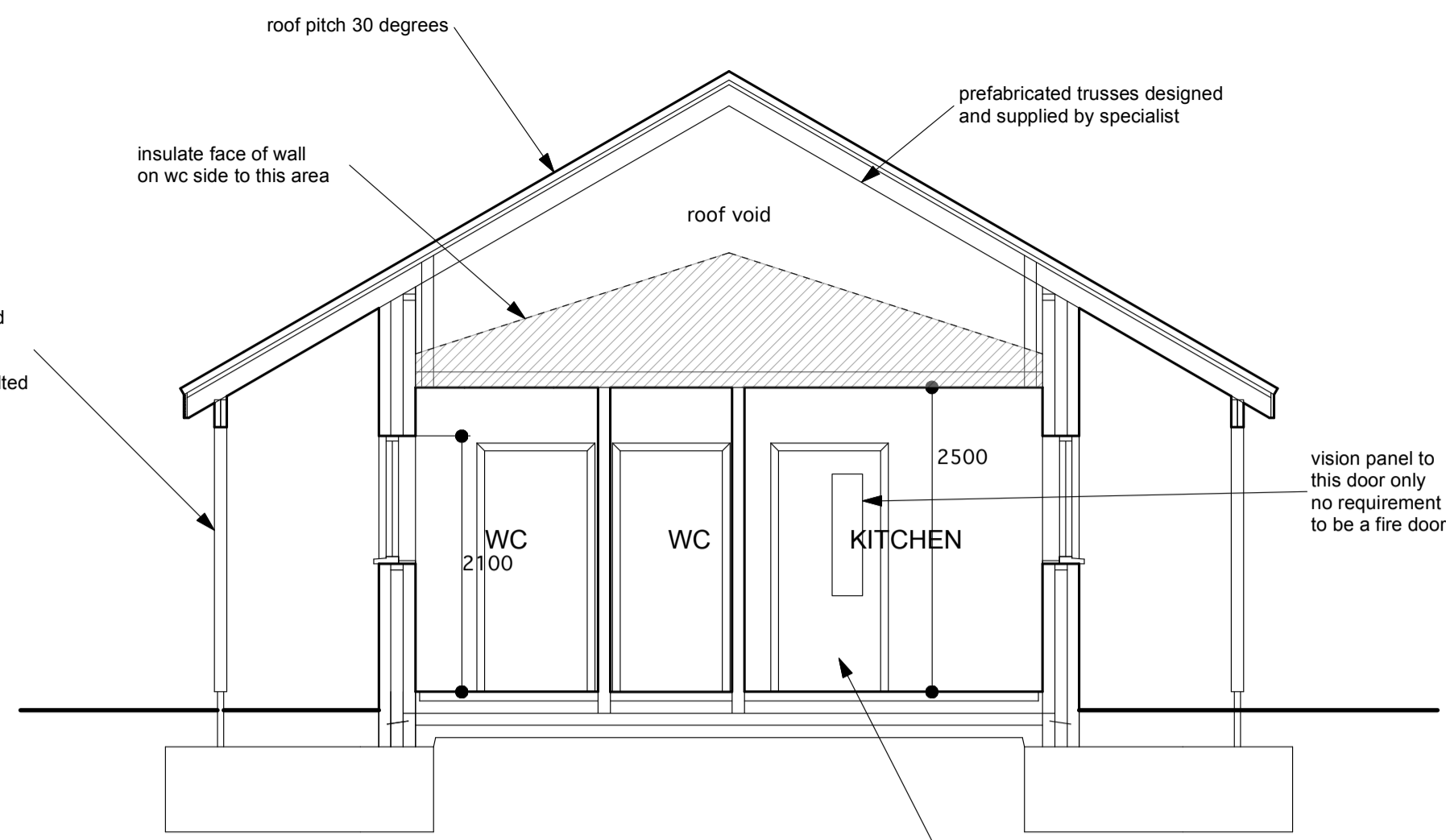
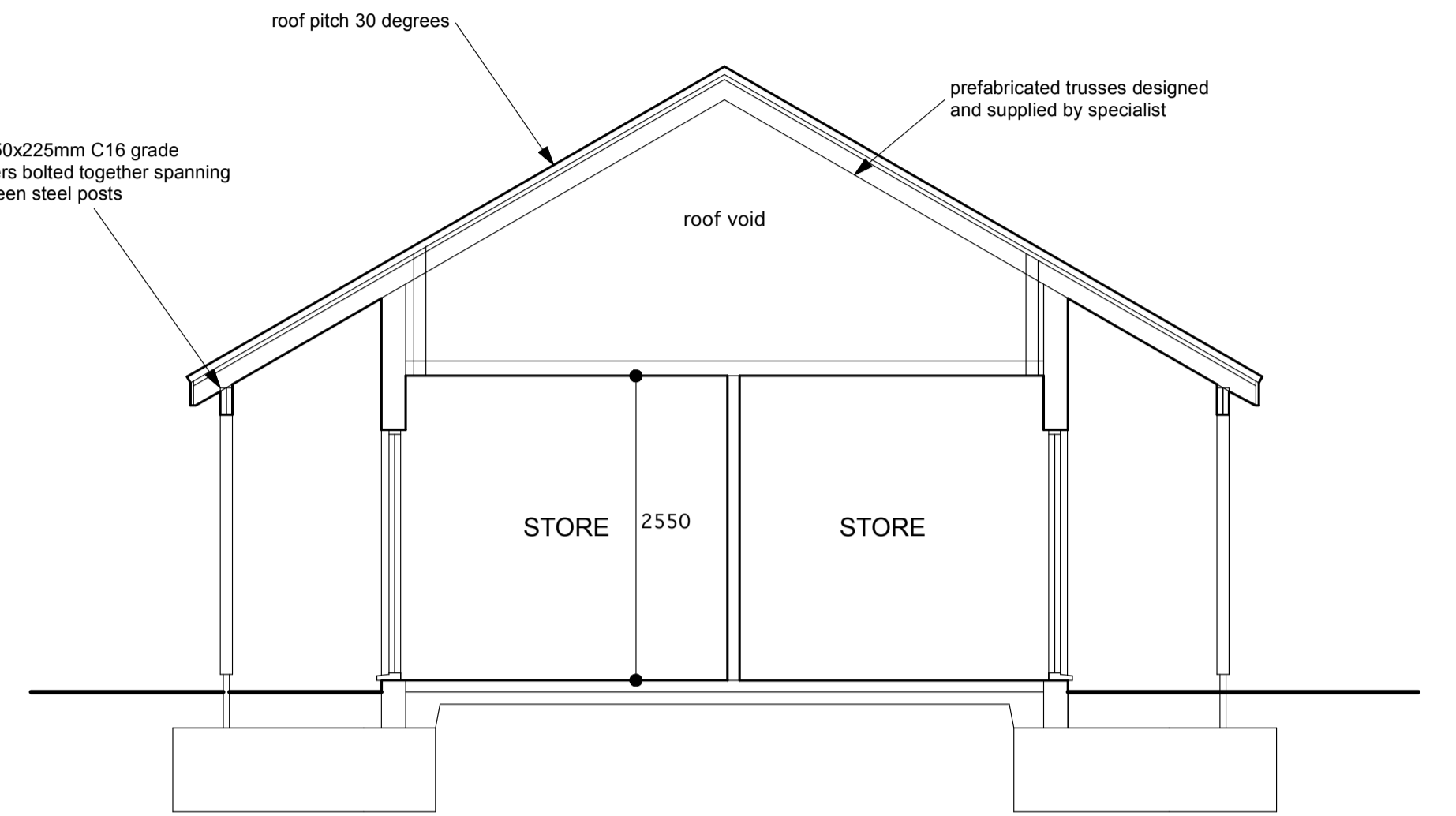


SECTION THROUGH MEETING ROOM

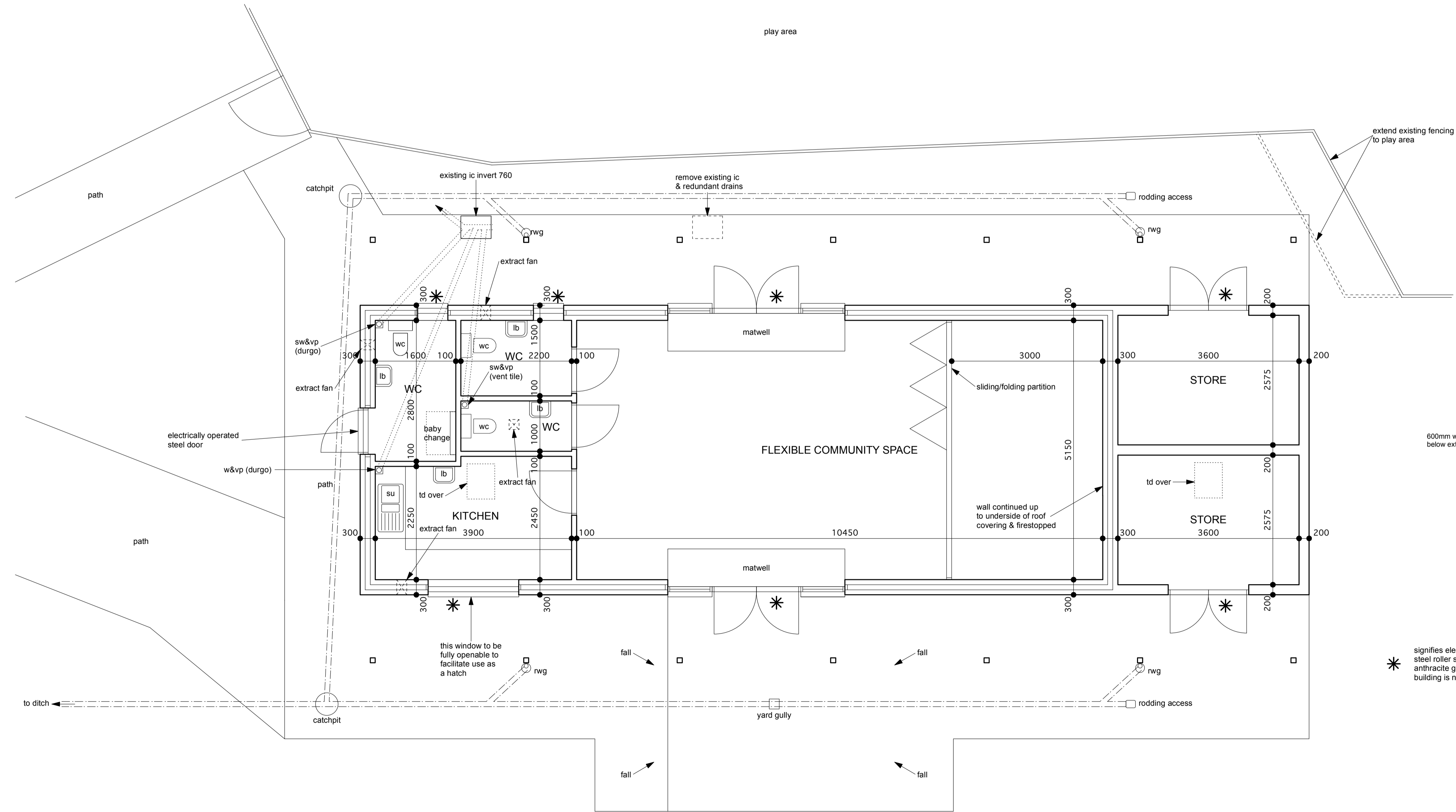


SECTION THROUGH KITCHEN & WC'S

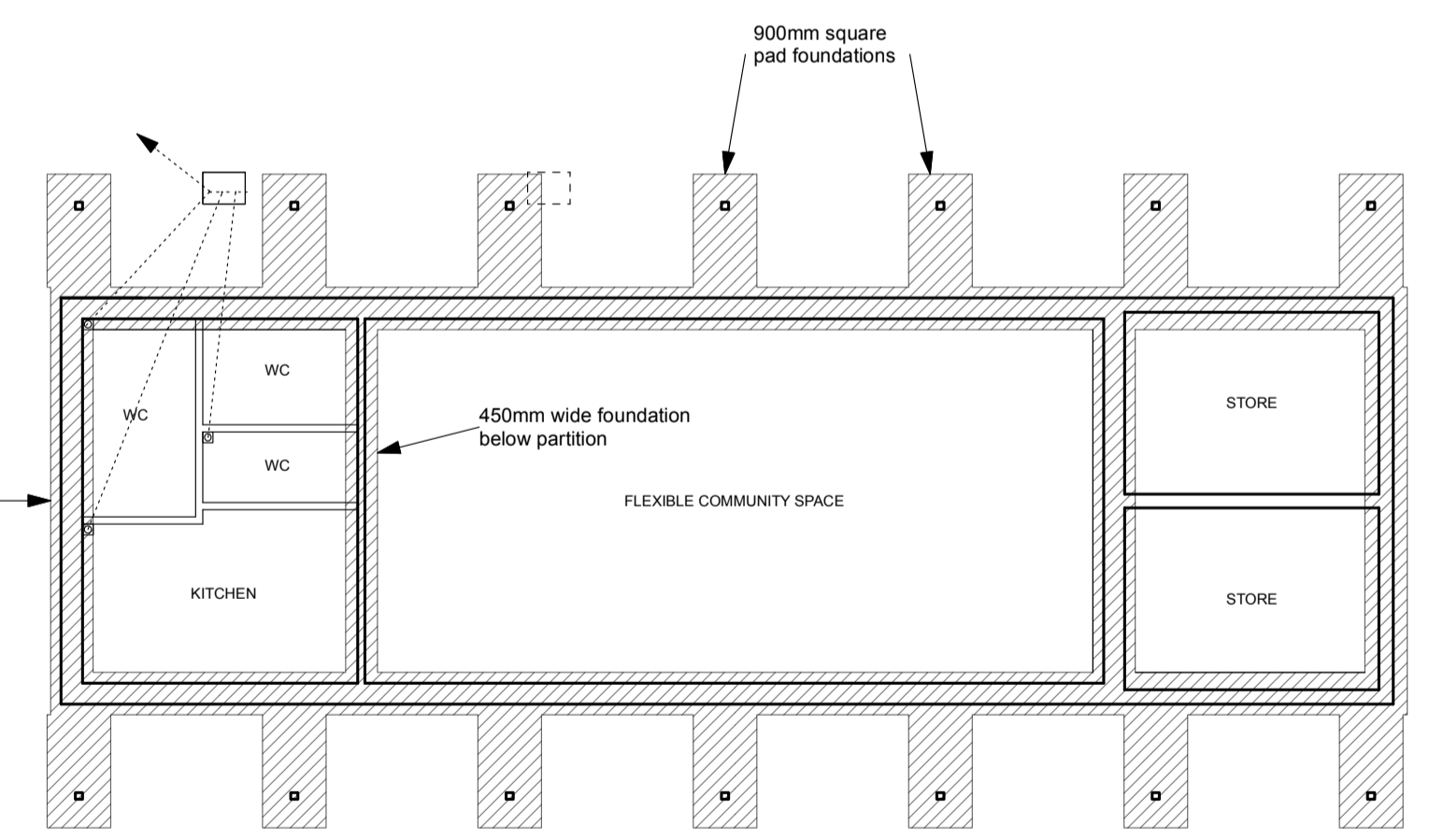


SECTION THROUGH STORES

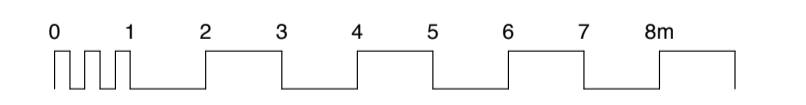
- NOTES:
1. THIS DRAWING is copyright 2021 Mullins Dowse Architects
 2. SETTING OUT all dimensions to structural faces
 3. SETTING OUT confirm all dimensions on site
 4. DIMENSIONS OF JOINERY components show actual joinery sizes: the builder must allow tolerances for building in, fitting and joining
 5. CONFIRM DIMENSIONS on site for all components prior to manufacture
 6. REPORT all discrepancies to the clients/architects and obtain their instructions/advice before proceeding
 7. READ THIS DRAWING in conjunction with the relevant structural engineers drawings
 8. READ THIS DRAWING in conjunction with the construction notes



PLAN



1:100 FOUNDATION PLAN



* signifies electrically operated steel roller shutter finished anthracite grey for use when building is not in use

revision	date	description	drawn	checked
C	Mar 2022	Kitchen sink location revised & drains altered		
B	Mar 2022	Revs following Building Control plan check		
A	Feb 2022	Notes added to plan re Store/Community Space wall & Kitchen door		

project Replacement Pavilion At Melton Playing Field, Melton Road, Melton, Woodbridge IP12 1NH.

drawing Working Drawing Detail Plan, Sections & Foundation Plan

date September 2021 scale 1:50 & 1:100 @ A1 drawn AW checked AW

job ref 6261 drawing 3 revision C Mullins Dowse Architects



10A Quay Street, Woodbridge, Suffolk, IP12 1BX
01394 382544
www.mullinsdowse.co.uk