



# the **play** inspection company

---

## Annual Inspection

Melton Parish Council

Beresford Drive Play Area

Beresford Drive, Woodbridge, Suffolk, IP12 1JJ



**API** Associate



Unit 5, Glenmore Business Park, Blackhill Road, Poole, Dorset, BH16 6NL  
t- 01202 590675 e- info@playinspections.co.uk

[www.playinspections.co.uk](http://www.playinspections.co.uk)

## Inspection Scope for RPII Inspection Methodology

This document outlines the RPII scope for inspections undertaken by the Inspectors listed as Annual Inspectors on the RPII Register of Inspectors when undertaking Indoor Annual, Outdoor Annual, Outdoor Operational and Outdoor Routine inspections.

Inspections are undertaken with reference to the standards listed in this preamble only; where no date for the standard is given it will be the standard that is current at the time of inspection except where overlap periods are granted by the standards committee when standards are updated. The information contained in reports is provided to assist the owner/operator in fulfilling their responsibilities as detailed in the relevant standard. Other standards referenced within the listed standards do not form part of the inspection, unless they are also explicitly listed here.

The following standards are relevant to all installations of equipment that are publicly accessible to users; this includes public parks, pay and play parks, schools, nurseries, public houses, holiday parks, indoor play centres, farm parks etc. All equipment used or employed in publicly accessible areas should meet with the requirements of the relevant standards (listed below):

BS EN 1176 Parts 1, 2, 3, 4, 5, 6, 10 & 11 Playground equipment intended for permanent installation outdoors & indoors.

BS EN 1176 Part 7 - 'Guidance on Installation, Inspection, Maintenance and Operation' (this document gives guidance to the owners/operators of the facility on the installation, inspection, maintenance and operation of playground equipment, excluding ancillary items).

In the United Kingdom the National Foreword forms an important part to the understanding and implementation of the recommendations set out in this document. It clarifies the application of the document within the UK as best practice guidance, as the document has been used since its initial publication. Therefore, in the UK this standard (BS EN 1176 – Part 7) contains no requirements and needs to be read and implemented as guidance, with the use of the term 'shall' therefore becoming a recommendation, as in the term 'should'.

Domestic play equipment falls outside of the scope of BS EN 1176 and has its own standards (BS EN 71 series – Safety of Toys). Where domestic equipment can be identified this will be acknowledged in the report but any comments concerning compliance will follow the requirements and recommendations of BS EN 1176.

When water play items, including spray parks, are inspected any comments concerning compliance within the inspection will refer to BS EN 1176. We have not assessed these against the requirements of BS EN 17232 (Water play equipment and features).

Other equipment that is not clearly identified as unsupervised or domestic (natural play, self-build equipment etc.) will be assessed for compliance with the relevant standard listed below:

**BS EN 15312** Free access multi-sports equipment  
**BS EN 14974** Skateparks  
**BS EN 16630** Permanently installed outdoor fitness equipment  
**BS EN 16899** Parkour equipment (plus RPII/API guidance notes)

Annual and Post Installation inspections will take into consideration compliance with these current standards, and defects related to wear and vandalism. Items not listed in the report have not been included in the inspection. The inspection will cover the playground equipment and the active area (that area which is obviously part of the playground), nominally up to three metres around, the fence line if closer, or other areas as agreed.

Operational inspections only take into consideration defects related to cleanliness, equipment ground clearances, ground surface finishes, exposed foundations, sharp edges, missing parts, excessive wear (of moving parts) structural integrity, wear and vandalism.

Routine visual inspections relate only to the most obvious defects such as broken or missing parts, litter, vandalism and issues created by severe weather conditions (the intention is to identify hazards created by storm damage).

All inspections are non-dismantling, non-destructive and do not include any structural, toxicology or impact assessments defined in the standard; however, the inspector will undertake a manual test for stability and if equipment fails under manual load, or any other hazard is identified as an unacceptable risk, the owner/operator will be notified as soon as practicably possible.

The inspector will access all reasonably accessible equipment and will assess all reasonably accessible parts above the standing surface. Where it is not possible to access parts of the equipment without employing an alternative means of access the report will record the action required by the owner/operator to ensure the continued safe use of the equipment.

Ancillary equipment will be assessed using the inspector's knowledge and experience of the standards named in this document. (Note: Ancillary items are not included in the specific equipment-type parts of the EN 1176 series; hence they are not assessed for compliance with EN 1176 series and are subject to a general safety assessment).

The owner/operator is responsible for the overall safety of the equipment and area.

The inspector will not undertake any of the following works unless specifically agreed in writing at the time of order:

Checking the depth and underlying structural integrity of any surface areas and/or carrying out any testing of the impact attenuating properties of any surfaces; the identification of any corrosion, rot or other deterioration in any apparatus or equipment other than by an external inspection; the inspection of any equipment (or part thereof) that is beneath the playing surface (loose-fill materials may be moved to expose foundations); tightening any bolts, hinges or other fixing devices on any apparatus or equipment; assessing or inspecting any electrical installations contained on any site and/or apparatus and/or equipment; assessing or inspecting any water supplies and/or water features and/or any associated computerised systems (including carrying out any programming); where planting or trees are mentioned in the report no assessments of toxicity, suitability or condition are undertaken – the owner/operator should have suitable inspections provided by a competent person.

The owner/operator should have a 'design risk assessment' provided by the manufacturer/designer of the area for the equipment and location in which the facility is installed.

The operator is responsible for managing risks of their provision and is required by law to carry out a 'suitable and sufficient assessment' of the risks associated with a site or activity. This inspection shall be considered as contributing to the operator's discharge of this responsibility.

The details contained within the report are a snapshot of the condition at the time of inspection only and subsequent events may affect the condition of the facility. Suggested remedial actions are based on the knowledge and experience of the inspector and/or that of the inspection company. The owner/operator should always seek the advice of the manufacturer or a competent person when undertaking repairs and/or modifications to equipment.

A full copy of the Play Inspection Company Ltd. Terms & Conditions is available on our website ([www.playinspections.co.uk](http://www.playinspections.co.uk))

The operator is responsible for following the guidance of the relevant standards. The standards give guidance on the installation, inspection, maintenance and operation of the various types of facilities. The inspection guidance is listed in Table 1, with an indication of which parts will be included in an RPII Annual or Post-Installation Inspection. The relevant standards also contain additional parts which the operator should follow.

Inspection recommendations of relevant standards Refer to relevant standards for full text	Annual Main	RPII Annual/ Post Installation Inspection
6.1 d) Overall levels of safety of equipment (see note 1)	✓	✓ [1]
6.1 d) Overall levels of safety of foundations (see note 1)	✓	✓ [1]
6.1 d) Overall levels of safety of playing surfaces (see note 2)	✓	✓ [2]
6.1 d) Compliance with the relevant parts of the standard and or risk assessment (see note 3)	✓	✓ [3]
6.1 d) Effects of weather	✓	✓
6.1 d) Presence of rot, decay or corrosion (see note 1)	✓	✓ [1]
6.1 d) Assessment of repairs made or added or replaced components (see note 4)	✓	✓ [4]
6.1 d) Excavation or dismantling/additional measures	✓	✗
6.2.1 Assessment of glass reinforced plastics (see note 5)	✓	✓ [5]
6.2.1 Inspection of one post equipment (see note 1)	✓	✓ [1]
6.2.4 Undertaking the Operators inspection protocol	✓	✗

NB: The clause numbers in table 1 are taken from BS EN 1176 - Part 7:2020. The content is equally applicable to all other relevant standards listed herein. Playgrounds contain a range of equipment from different manufacturers and installed over a number of years; operators should implement any guidance provided by the manufacturer. Item specific detail is not readily available to RPII Playground Inspectors, whose report contributes to the operator's overall Annual Main Inspection as detailed in the relevant standards.

[1] A manual test only is undertaken for stability. Wear and instability are only detectable where readily apparent without dismantling or destruction and without the use of tools, excavation or specialist equipment. Rot and corrosion are tested or with a hammer and/or steel rod. Decay in timber may exist which can only be found with specialist equipment.

[2] Only the visible condition and dimensional compliance of surface extent is considered. Neither testing of impact attenuating properties nor measurement of the thickness of bound surfaces are undertaken on RPII annual inspections.

[3] The inspection assesses compliance where this can be tested on site using manual methods without dismantling, destruction and without the use of tools or specialist equipment.

[4] The operator should use manufacturer's recommended parts, or equivalent. We are unable to verify if such parts have been used, and any subsequent change in quality or performance.

[5] Visible glass fibres will be noted in reports. The operator is responsible for repairs or replacement.

# Risk Assessment Matrix

			Scores in the report are multiplication factors of Likelihood x Severity					
			Severity>>					
<b>Likelihood</b>	Very High probability, if the situation is not addressed an accident is almost certain.	5	Very High	VL (5)	L (10)	M (15)	H (20)	VH (25)
	High probability an accident is probable without any added factor.	4	High	VL (4)	L (8)	M (12)	H (16)	H (20)
	Moderate probability an incident is foreseeable.	3	Moderate	VL (3)	L (6)	L (9)	M (12)	M (15)
	Some probability, requires a combination of factors to take place.	2	Low	VL (2)	VL (4)	L (6)	L (8)	L (10)
	No significant probability; lightning strike, freak accident.	1	Very Low	VL (1)	VL (2)	VL (3)	VL (4)	VL (5)
			Very Low	Low	Moderate	High	Very High	
			1	2	3	4	5	
			No injury likely e.g. damaged or soiled clothing, minor bruising, grazes	Minor injury, laceration or bruising requiring first aid only	Injury requiring medical intervention e.g. cuts requiring stitches	Serious injury including concussions or fracture of long bones	Severe injury involving a potential life changing injury or fatality	
			<b>Severity&gt;&gt;</b>					
<p>Note 1: The total risk scores included within our reports are a multiplication factor of the calculated Likelihood and Severity of each finding. Both Likelihood and Severity are given a number between 1 - 5 as shown on the matrix above and these two numbers are then multiplied together to give the total risk score that is shown against defects on the report. Total risk scores can be divided in both directions, i.e. a total risk score of 12 could be a Likelihood (3) x Severity (4) or Likelihood (4) x Severity (3).</p> <p>Note 2: When we inspect we only see a snapshot of the current condition of the equipment. It is the operators responsibility to ensure that there is a continuing level of maintenance to keep the equipment in good working order and the site fit for use.</p>								

**Equipment has been assessed to the following standards where relevant:**

- BS EN 1176 Parts 1-11 (Playground equipment and surfacing)
- BS EN 14974 (Facilities for users of roller sports equipment)
- BS EN 15312 (Free access multi-sports equipment)
- BS EN 16899 (Parkour Equipment)
- BS EN 16630 (Outdoor Fitness Equipment).



## Beresford Drive Play Area

Inspection Ref: 2137116

Site Ref: 80855

Inspected: 2-August-2023 - 10:56 by Liam Last

Risk Assessment: 12 Moderate Risk



**Location:**

The site is located in an area of public open space and is overlooked by a number of properties in the local community.

**Disabled Access:**

Some accessible features; an area that presents difficulties to the majority of people with disabilities but in favourable circumstances and certainly in partnership can be accessed.

**i** 8 - Low Risk

**Item:** Site General  
**Manufacturer:** Owner/Operator  
**Surface Type:** N/A  
**Item Quantity:** 1  
**Equipment Compliance:** N/A  
**Surface Area Compliance:** N/A

**Total Findings:** 3



**Finding 1**

There is algae, silt or moss growth on the surface resulting in slippery conditions - Clean and treat appropriately

**Finding 2**

There is a loose cone on site - Remove

**Finding 3**

There is weed / vegetation growth on, between, or around the edges of the surfacing - Remove weed / vegetation growth

**i** 6 - Low Risk

**Item:** Sign  
**Manufacturer:** Owner/Operator  
**Surface Type:** N/A  
**Item Quantity:** 1  
**Equipment Compliance:** N/A  
**Surface Area Compliance:** N/A

**Total Findings:** 1



**Finding 1**

A sign is damaged - Replace

**i** 8 - Low Risk

**Item:** Gate - Self Closing  
**Manufacturer:** Medway Gate Co.  
**Surface Type:** Bitmac  
**Item Quantity:** 1  
**Equipment Compliance:** N/A  
**Surface Area Compliance:** N/A



**Total Findings:** 2

**Finding 1**

The gate is not operating correctly - Take effective action to ensure the gate closes between 4 and 8 seconds

**Finding 2**

There are trip hazards at the edges of the surface - Reinstate surrounding surface levels to remove the trip points

**i** 6 - Low Risk

**Item:** Fence - Bow Top  
**Manufacturer:** Not Identified  
**Surface Type:** Grass  
**Item Quantity:** 1  
**Equipment Compliance:** N/A  
**Surface Area Compliance:** N/A



**Total Findings:** 2

**Finding 1**

There is some damage to the fence sections - Monitor for any further deterioration and repair as required

**Finding 2**

There are a number of loose posts around the fence - Monitor for any further deterioration and reset as required

**i** 4 - Very Low Risk

**Item:** Gate - Maintenance  
**Manufacturer:** Not Identified  
**Surface Type:** Grass  
**Item Quantity:** 1  
**Equipment Compliance:** N/A  
**Surface Area Compliance:** N/A



**Total Findings:** 1

**Finding 1**

The maintenance gate was correctly padlocked at the time of inspection, however this means that the inspector was unable to fully assess the gate - Ensure that there are 12mm gaps throughout the full range of motion on gate/s and between leaves where relevant

**i** 6 - Low Risk

**Item:** Gate - Self Closing  
**Manufacturer:** Not Identified  
**Surface Type:** Paving Slabs  
**Item Quantity:** 1  
**Equipment Compliance:** N/A  
**Surface Area Compliance:** N/A



**Total Findings:** 1

**Finding 1**

A number of fixing(s) have worked loose - Secure all loose fixings



**i** 8 - Low Risk

**Item:** Bench  
**Manufacturer:** Broxap  
**Surface Type:** Grass  
**Item Quantity:** 1  
**Equipment Compliance:** N/A  
**Surface Area Compliance:** N/A



**Total Findings:** 3

**Finding 1**

There is some evidence of fire damage to the item - Monitor for any further deterioration and repair as required

**Finding 2**

The surface has eroded in some areas and may be slippery in wet conditions - Reinstate the surface

**Finding 3**

The fixings have corroded excessively - Replace all corroded fixings

**i** 4 - Very Low Risk

**Item:** Litter Bin  
**Manufacturer:** Not Identified  
**Surface Type:** Grass  
**Item Quantity:** 1  
**Equipment Compliance:** N/A  
**Surface Area Compliance:** N/A



**Total Findings:** 1

**Finding 1**

This item is satisfactory - no work required -

**i 8 - Low Risk**

**Item:** 1 Bay 2 Seat (Cradle)  
**Manufacturer:** Playdale Playgrounds Ltd  
**Surface Type:** Wet Pour  
**Item Quantity:** 1  
**Equipment Compliance:** Yes  
**Surface Area Compliance:** Yes

**Total Findings:** 10



**Finding 1**

There is some strimmer / machinery damage apparent on the posts, this can penetrate the preservative applied to the timber and accelerate the rotting process - Monitor for any deterioration (rot) and replace as required

**Finding 2**

The timber has a number of splits/shakes or air cracks and this may affect the stability or allow water ingress which will accelerate the rotting process - Monitor to ensure the splits do not cross through fixing points of the structure and/or cause any instability

**Finding 3**

There is some evidence of rot in the timber - Monitor for any further deterioration and replace as required

**Finding 4**

The surface is lifting at the edges and creating trip points - Repair perimeter of surfacing to remove trip points

**Finding 5**

There is algae or moss on the surface of the equipment which can lead to the onset of rot - Monitor condition of the timber (rot) Clean and treat appropriately

**Finding 6**

There is some notable evidence of chain wear - Monitor for any further deterioration and replace when 40% worn

**Finding 7**

There are caps missing from the underside of the seats - Replace missing caps under the seats

**Finding 8**

There are gaps opening between the surfacing and the edging surround or between the joints in the surfacing - Monitor for any further deterioration and repair as required

**Finding 9**

The swivel joint is becoming worn - Monitor for any further deterioration and replace

**Finding 10**

There is/are bolt cap covers missing or damaged on the item - Replace missing or damaged bolt cap covers

**i 9 - Low Risk**

**Item:** Multi Play (Toddler)  
**Manufacturer:** Playdale Playgrounds Ltd  
**Surface Type:** Wet Pour  
**Item Quantity:** 1  
**Equipment Compliance:** No  
**Surface Area Compliance:** Yes

**Total Findings:** 17



**Finding 1**

The surface is lifting at the edges and creating trip points - Repair perimeter of surfacing to remove trip points

**Finding 2**

There are significant gaps (over 30mm) between the surface and the edging or between the joints in the surface; these are large enough for a small foot to enter - Repair surfacing

**Finding 3**

There is algae or moss on the surface of the equipment - Clean and treat appropriately

**Finding 4**

There is some evidence of rot in the timber - Monitor for any further deterioration and replace as required

**Finding 5**

There are a number of dents in the slide surface - Monitor for any further deterioration and repair as required

**Finding 6**

The side of the slide is damaged - Monitor for any further deterioration and repair as required

**Finding 7**

There is/are finger entrapment/s in the slide starting section due to missing inserts and the item fails to meet the requirements of BS EN 1176 Part 1 4.2.7.6 Entrapment of fingers - Provide inserts to remove entrapment

**Finding 8**

There is/are bolt cap covers missing or damaged on the item - Replace missing or damaged bolt cap covers

**Finding 9**

The timber has a number of splits/shakes or air cracks and this may affect the stability or allow water ingress which will accelerate the rotting process - Monitor to ensure the splits do not cross through fixing points of the structure and/or cause any instability

**Finding 10**

There are falls in excess of 600mm between adjacent components on the structure, in contravention of the recommendations set out in BS EN 1176 Part 1; 4.2.8.4 - Monitor - No remedial work recommended

**Finding 11**

The connecting links are in excess of 8.6mm and less than 12mm and fail the requirements of BS EN 1176 Part 1; clause 4.2.13, Chains - Monitor use and replace with compliant links at the next maintenance cycle

**Finding 12**

There are areas or parts of the timber on the structure that have rotted - Replace all affected timbers

**Finding 13**

A number of fixing(s) have worked loose - Secure all loose fixings

**Finding 14**

There is some evidence of rot in the timber - Monitor for any further deterioration and replace as required



**Finding 15**

There are gaps in excess of 30mm in the direction of travel creating foot entrapment/s in contravention of BS EN 1176 Part 1 in the bridge - Monitor - no remedial action recommended

**Finding 17**

A barrier has been replaced and there are metal brackets remaining creating sharp edges - Remove brackets

**Finding 16**

A number of fixing(s) have worked loose - Secure all loose fixings

**8 - Low Risk**

**Item:** Spring Horse  
**Manufacturer:** Ledon  
**Surface Type:** Rubber Tiles  
**Item Quantity:** 1  
**Equipment Compliance:** No  
**Surface Area Compliance:** Yes

**Total Findings:** 5



**Finding 1**

The end of handgrips and/or footrests have a cross section of less than 15cm<sup>2</sup> and fail to meet the requirements of BS EN 1176 Part 6 - Monitor - No remedial work recommended

**Finding 3**

The paintwork on the spring has been damaged or worn exposing the metal underneath which is rusting - Treat any rusting components and repaint

**Finding 5**

The end caps are missing on the Handgrips/Footrests - Replace missing end caps

**Finding 2**

There is some minor damage to the surface - Monitor for any further deterioration and repair as required

**Finding 4**

The U bolts clamping the spring are worn - Replace

**i 6 - Low Risk**

**Item:** Spring Bird  
**Manufacturer:** Ledon  
**Surface Type:** Rubber Tiles  
**Item Quantity:** 1  
**Equipment Compliance:** No  
**Surface Area Compliance:** Yes

**Total Findings:** 4



**Finding 1**

The end of handgrips and/or footrests have a cross section of less than 15cm<sup>2</sup> and fail to meet the requirements of BS EN 1176 Part 6 - Monitor - No remedial work recommended

**Finding 2**

The U bolts clamping the spring are worn - Monitor for any further deterioration and replace as required

**Finding 3**

The paintwork on the spring has been damaged or worn exposing the metal underneath which is rusting - Treat any rusting components and repaint

**Finding 4**

There is some damage to the item - Monitor for any further deterioration and repair as required

**! 12 - Moderate Risk**

**Item:** Multi Play (Junior)  
**Manufacturer:** Playdale Playgrounds Ltd  
**Surface Type:** Wet Pour  
**Item Quantity:** 1  
**Equipment Compliance:** No  
**Surface Area Compliance:** Yes



**Total Findings:** 27

**Finding 1**

The timber has a number of splits/shakes or air cracks and this may affect the stability or allow water ingress which will accelerate the rotting process - Monitor to ensure the splits do not cross through fixing points of the structure and/or cause any instability

**Finding 2**

There is algae or moss on the surface of the equipment - Clean and treat appropriately

**Finding 3**

A number of net connector fixing(s) have worked loose - Secure all loose fixings

**Finding 4**

There are falls in excess of 600mm between adjacent components on the structure, in contravention of the recommendations set out in BS EN 1176 Part 1; 4.2.8.4 - Monitor - No remedial work recommended

**Finding 5**

The rope has worn and wire strands are exposed - Replace rope or net

**Finding 6**

The ropes on this item have been taped and we are unable to fully assess the condition of the rope, ensure no wire strands are broken beneath the tape - Repair or replace as required

**Finding 7**

There is/are bolt cap covers missing or damaged on the item - Replace missing or damaged bolt cap covers

**Finding 8**

A number of fixing(s) have worked loose - Secure all loose fixings

**Finding 9**

The wet pour has been repaired with bitmac which forms a hard object within the impact area - Replace with a appropriate safer surface

**Finding 10**

The surface is lifting at the edges and creating trip points - Repair perimeter of surfacing to remove trip points

**Finding 11**

There are areas or parts of the timber on the structure that have rotted - Replace all affected timbers

**Finding 12**

There are areas or parts of the timber on the structure that have rotted - Replace all affected timbers

**Finding 13**

The inspector has some concerns about the internal condition of the timber and was unable to verify the structural integrity without further testing. We recommend a Resi-PD survey to establish the condition of the timber at it's core. - Contact the Play Inspection Company office for further information

**Finding 14**

The net connections are corroding - Monitor for any further deterioration and replace as required



<b>Finding 15</b> There are a number of dents in the slide surface - Monitor for any further deterioration and repair as required	<b>Finding 16</b> Parts of the timber are rough or splintered - Remove all rough or sharp edges
<b>Finding 17</b> There is offensive graffiti present - Remove as soon as practicable	<b>Finding 18</b> There is/are finger entrapment/s in the platform and the item fails to meet the requirements of BS EN 1176 Part 1 4.2.7.6 Entrapment of fingers - Monitor - No remedial work recommended
<b>Finding 19</b> The plywood has delaminated in some places - Remove all rough or splintered edges.	<b>Finding 20</b> There are gaps opening between the surfacing and the edging surround or between the joints in the surfacing - Monitor for any further deterioration and repair as required
<b>Finding 21</b> There are projecting bolt thread(s) present - Remove excess thread length and deburr or provide cap	<b>Finding 22</b> There is/are finger entrapment/s in the barrier due to missing fixings and the item fails to meet the requirements of BS EN 1176 Part 1 4.2.7.6 Entrapment of fingers - Provide missing fixings to remove entrapment
<b>Finding 23</b> A number of fixing(s) have worked loose - Secure all loose fixings	<b>Finding 24</b> There is some evidence of rot in the timber - Monitor for any further deterioration and replace as required
<b>Finding 25</b> The tower is becoming unstable - Repair or replace as required	<b>Finding 26</b> The fixings have corroded excessively - Replace all corroded fixings
<b>Finding 27</b> There is some damage to the item - Monitor for any further deterioration and repair as required	

**!** 12 - Moderate Risk

**Item:** 1 Bay 2 Seat (Flat)  
**Manufacturer:** Playdale Playgrounds Ltd  
**Surface Type:** Wet Pour  
**Item Quantity:** 1  
**Equipment Compliance:** N/A  
**Surface Area Compliance:** N/A

**Total Findings:** 10



**Finding 1**

There are areas or parts of the timber on the structure that have rotted (Risk assessment has been lowered due to there being no swings attached) - Replace all affected timbers before re hanging swings

**Finding 3**

The timber has a number of splits/shakes or air cracks and this may affect the stability or allow water ingress which will accelerate the rotting process - Monitor to ensure the splits do not cross through fixing points of the structure and/or cause any instability

**Finding 5**

The surface is lifting at the edges and creating trip points - Repair perimeter of surfacing to remove trip points

**Finding 7**

Parts of the timber are rough or splintered - Remove all rough or sharp edges

**Finding 9**

There is some minor damage to the surface - Monitor for any further deterioration and repair as required

**Finding 2**

There is some strimmer / machinery damage apparent on the posts, this can penetrate the preservative applied to the timber and accelerate the rotting process - Monitor for any deterioration (rot) and replace as required

**Finding 4**

There are a number of redundant staples attached to the equipment - Remove redundant staples

**Finding 6**

There is some graffiti present - Remove the graffiti

**Finding 8**

There is some evidence of rot in the timber - Monitor for any further deterioration and replace as required

**Finding 10**

The seat(s) and suspension were missing at the time of inspection and the inspector was unable to make a full compliance assessment - Replace missing seat(s) and suspension



## Findings information

### 8 - Low Risk (Finding 1)

**Item:** Ancillary Items - Site General  
**Manufacturer:** Owner/Operator

**Risk Level:** L - Low Risk  
**Surface:** N/A



**Finding:** There is algae, silt or moss growth on the surface resulting in slippery conditions

**Action:** Clean and treat appropriately

**i** 8 - Low Risk (Finding 2)

**Item:** Ancillary Items - Site General  
**Manufacturer:** Owner/Operator

**Risk Level:** L - Low Risk  
**Surface:** N/A



**Finding:** There is a loose cone on site

**Action:** Remove

**i** 6 - Low Risk (Finding 3)

**Item:** Ancillary Items - Site General  
**Manufacturer:** Owner/Operator

**Risk Level:** L - Low Risk  
**Surface:** N/A



**Finding:** There is weed / vegetation growth on, between, or around the edges of the surfacing

**Action:** Remove weed / vegetation growth

**i** 6 - Low Risk (Finding 1)

**Item:** Ancillary Items - Sign  
**Manufacturer:** Owner/Operator

**Risk Level:** L - Low Risk  
**Surface:** N/A



**Finding:** A sign is damaged

**Action:** Replace

**i** 5 - Very Low Risk (Finding 1)

**Item:** Gates - Gate - Self Closing  
**Manufacturer:** Medway Gate Co.

**Risk Level:** V - Very Low Risk  
**Surface:** Bitmac



**Finding:** The gate is not operating correctly

**Action:** Take effective action to ensure the gate closes between 4 and 8 seconds

**i** 8 - Low Risk (Finding 2)

**Item:** Gates - Gate - Self Closing  
**Manufacturer:** Medway Gate Co.

**Risk Level:** L - Low Risk  
**Surface:** Bitmac



**Finding:** There are trip hazards at the edges of the surface

**Action:** Reinstate surrounding surface levels to remove the trip points

**i** 6 - Low Risk (Finding 1)

**Item:** Fences - Fence - Bow Top  
**Manufacturer:** Not Identified

**Risk Level:** L - Low Risk  
**Surface:** Grass



**Finding:** There is some damage to the fence sections

**Action:** Monitor for any further deterioration and repair as required

**6 - Low Risk (Finding 2)**

**Item:** Fences - Fence - Bow Top  
**Manufacturer:** Not Identified

**Risk Level:** L - Low Risk  
**Surface:** Grass



**Finding:** There are a number of loose posts around the fence

**Action:** Monitor for any further deterioration and reset as required

**4 - Very Low Risk (Finding 1)**

**Item:** Gates - Gate - Maintenance  
**Manufacturer:** Not Identified

**Risk Level:** V - Very Low Risk  
**Surface:** Grass



**Finding:** The maintenance gate was correctly padlocked at the time of inspection, however this means that the inspector was unable to fully assess the gate

**Action:** Ensure that there are 12mm gaps throughout the full range of motion on gate/s and between leaves where relevant

**i** 6 - Low Risk (Finding 1)

**Item:** Gates - Gate - Self Closing  
**Manufacturer:** Not Identified

**Risk Level:** L - Low Risk  
**Surface:** Paving Slabs



**Finding:** A number of fixing(s) have worked loose

**Action:** Secure all loose fixings

**i** 6 - Low Risk (Finding 1)

**Item:** Ancillary Items - Bench  
**Manufacturer:** Broxap

**Risk Level:** L - Low Risk  
**Surface:** Grass



**Finding:** There is some evidence of fire damage to the item

**Action:** Monitor for any further deterioration and repair as required

**i** 6 - Low Risk (Finding 2)

**Item:** Ancillary Items - Bench  
**Manufacturer:** Broxap

**Risk Level:** L - Low Risk  
**Surface:** Grass



**Finding:** The surface has eroded in some areas and may be slippery in wet conditions  
**Action:** Reinstate the surface

**i** 8 - Low Risk (Finding 3)

**Item:** Ancillary Items - Bench  
**Manufacturer:** Broxap

**Risk Level:** L - Low Risk  
**Surface:** Grass



**Finding:** The fixings have corroded excessively  
**Action:** Replace all corroded fixings

**i** 6 - Low Risk (Finding 1)

<b>Item:</b>	Swings - 1 Bay 2 Seat (Cradle)	<b>Risk Level:</b>	L - Low Risk
<b>Manufacturer:</b>	Playdale Playgrounds Ltd	<b>Surface:</b>	Wet Pour



<b>Finding:</b> There is some strimmer / machinery damage apparent on the posts, this can penetrate the preservative applied to the timber and accelerate the rotting process	<b>Action:</b> Monitor for any deterioration (rot) and replace as required
---	--

**i** 6 - Low Risk (Finding 2)

<b>Item:</b>	Swings - 1 Bay 2 Seat (Cradle)	<b>Risk Level:</b>	L - Low Risk
<b>Manufacturer:</b>	Playdale Playgrounds Ltd	<b>Surface:</b>	Wet Pour



<b>Finding:</b> The timber has a number of splits/shakes or air cracks and this may affect the stability or allow water ingress which will accelerate the rotting process	<b>Action:</b> Monitor to ensure the splits do not cross through fixing points of the structure and/or cause any instability
---	--



**i** 6 - Low Risk (Finding 3)

**Item:** Swings - 1 Bay 2 Seat (Cradle)  
**Manufacturer:** Playdale Playgrounds Ltd

**Risk Level:** L - Low Risk  
**Surface:** Wet Pour



**Finding:** There is some evidence of rot in the timber

**Action:** Monitor for any further deterioration and replace as required

**i** 8 - Low Risk (Finding 4)

**Item:** Swings - 1 Bay 2 Seat (Cradle)  
**Manufacturer:** Playdale Playgrounds Ltd

**Risk Level:** L - Low Risk  
**Surface:** Wet Pour



**Finding:** The surface is lifting at the edges and creating trip points

**Action:** Repair perimeter of surfacing to remove trip points

**i** 8 - Low Risk (Finding 5)

**Item:** Swings - 1 Bay 2 Seat (Cradle)  
**Manufacturer:** Playdale Playgrounds Ltd

**Risk Level:** L - Low Risk  
**Surface:** Wet Pour



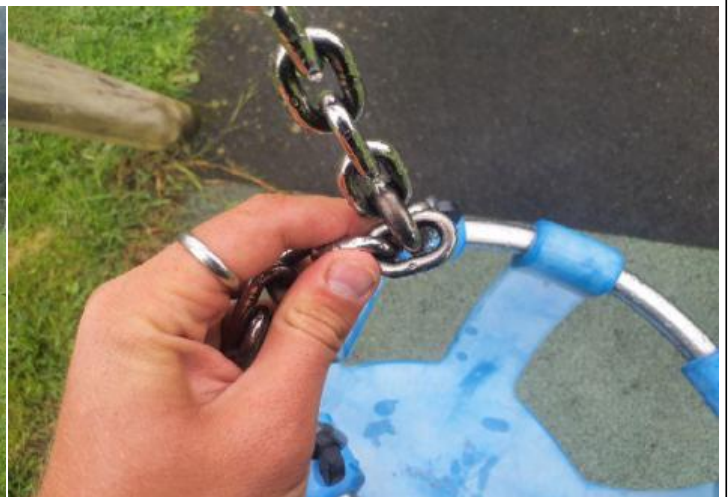
**Finding:** There is algae or moss on the surface of the equipment which can lead to the onset of rot

**Action:** Monitor condition of the timber (rot) Clean and treat appropriately

**i** 6 - Low Risk (Finding 6)

**Item:** Swings - 1 Bay 2 Seat (Cradle)  
**Manufacturer:** Playdale Playgrounds Ltd

**Risk Level:** L - Low Risk  
**Surface:** Wet Pour



**Finding:** There is some notable evidence of chain wear

**Action:** Monitor for any further deterioration and replace when 40% worn

**i** 6 - Low Risk (Finding 7)

**Item:** Swings - 1 Bay 2 Seat (Cradle)  
**Manufacturer:** Playdale Playgrounds Ltd

**Risk Level:** L - Low Risk  
**Surface:** Wet Pour



**Finding:** There are caps missing from the underside of the seats

**Action:** Replace missing caps under the seats

**i** 6 - Low Risk (Finding 8)

**Item:** Swings - 1 Bay 2 Seat (Cradle)  
**Manufacturer:** Playdale Playgrounds Ltd

**Risk Level:** L - Low Risk  
**Surface:** Wet Pour



**Finding:** There are gaps opening between the surfacing and the edging surround or between the joints in the surfacing

**Action:** Monitor for any further deterioration and repair as required

**i** 6 - Low Risk (Finding 9)

**Item:** Swings - 1 Bay 2 Seat (Cradle)  
**Manufacturer:** Playdale Playgrounds Ltd

**Risk Level:** L - Low Risk  
**Surface:** Wet Pour



**Finding:** The swivel joint is becoming worn

**Action:** Monitor for any further deterioration and replace

**i** 4 - Very Low Risk (Finding 10)

**Item:** Swings - 1 Bay 2 Seat (Cradle)  
**Manufacturer:** Playdale Playgrounds Ltd

**Risk Level:** V - Very Low Risk  
**Surface:** Wet Pour



**Finding:** There is/are bolt cap covers missing or damaged on the item

**Action:** Replace missing or damaged bolt cap covers

**i** 8 - Low Risk (Finding 1)

**Item:** Activity Equipment - Multi Play (Toddler)  
**Manufacturer:** Playdale Playgrounds Ltd

**Risk Level:** L - Low Risk  
**Surface:** Wet Pour



**Finding:** The surface is lifting at the edges and creating trip points

**Action:** Repair perimeter of surfacing to remove trip points

**i** 9 - Low Risk (Finding 2)

**Item:** Activity Equipment - Multi Play (Toddler)  
**Manufacturer:** Playdale Playgrounds Ltd

**Risk Level:** L - Low Risk  
**Surface:** Wet Pour



**Finding:** There are significant gaps (over 30mm) between the surface and the edging or between the joints in the surface; these are large enough for a small foot to enter

**Action:** Repair surfacing

**i** 8 - Low Risk (Finding 3)

**Item:** Activity Equipment - Multi Play (Toddler)  
**Manufacturer:** Playdale Playgrounds Ltd

**Risk Level:** L - Low Risk  
**Surface:** Wet Pour



**Finding:** There is algae or moss on the surface of the equipment

**Action:** Clean and treat appropriately

**i** 6 - Low Risk (Finding 4)

**Item:** Activity Equipment - Multi Play (Toddler)  
**Manufacturer:** Playdale Playgrounds Ltd

**Risk Level:** L - Low Risk  
**Surface:** Wet Pour



**Finding:** There is some evidence of rot in the timber

**Action:** Monitor for any further deterioration and replace as required

**i** 4 - Very Low Risk (Finding 5)

**Item:** Activity Equipment - Multi Play (Toddler)  
**Manufacturer:** Playdale Playgrounds Ltd

**Risk Level:** V - Very Low Risk  
**Surface:** Wet Pour



**Finding:** There are a number of dents in the slide surface

**Action:** Monitor for any further deterioration and repair as required

**i** 6 - Low Risk (Finding 6)

**Item:** Activity Equipment - Multi Play (Toddler)  
**Manufacturer:** Playdale Playgrounds Ltd

**Risk Level:** L - Low Risk  
**Surface:** Wet Pour



**Finding:** The side of the slide is damaged

**Action:** Monitor for any further deterioration and repair as required

**i** 5 - Very Low Risk (Finding 7)

**Item:** Activity Equipment - Multi Play (Toddler)  
**Manufacturer:** Playdale Playgrounds Ltd

**Risk Level:** V - Very Low Risk  
**Surface:** Wet Pour



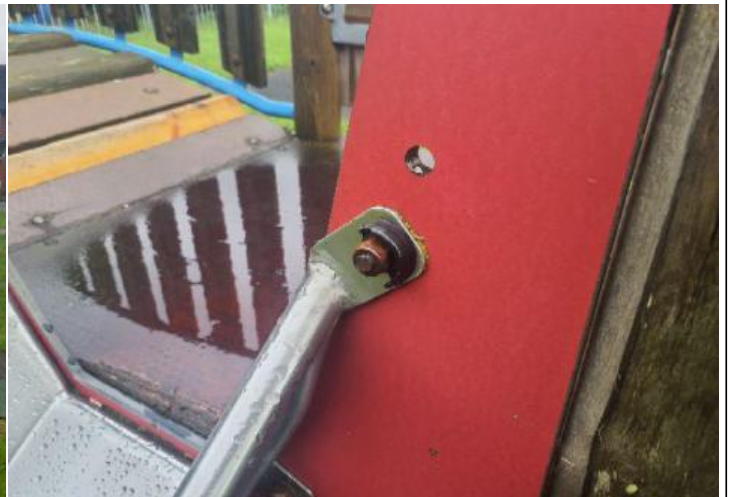
**Finding:** There is/are finger entrapment/s in the slide starting section due to missing inserts and the item fails to meet the requirements of BS EN 1176 Part 1 4.2.7.6 Entrapment of fingers

**Action:** Provide inserts to remove entrapment

**i** 4 - Very Low Risk (Finding 8)

**Item:** Activity Equipment - Multi Play (Toddler)  
**Manufacturer:** Playdale Playgrounds Ltd

**Risk Level:** V - Very Low Risk  
**Surface:** Wet Pour



**Finding:** There is/are bolt cap covers missing or damaged on the item

**Action:** Replace missing or damaged bolt cap covers



**i** 6 - Low Risk (Finding 9)

**Item:** Activity Equipment - Multi Play (Toddler)  
**Manufacturer:** Playdale Playgrounds Ltd

**Risk Level:** L - Low Risk  
**Surface:** Wet Pour



**Finding:** The timber has a number of splits/shakes or air cracks and this may affect the stability or allow water ingress which will accelerate the rotting process  
**Action:** Monitor to ensure the splits do not cross through fixing points of the structure and/or cause any instability

**i** 8 - Low Risk (Finding 10)

**Item:** Activity Equipment - Multi Play (Toddler)  
**Manufacturer:** Playdale Playgrounds Ltd

**Risk Level:** L - Low Risk  
**Surface:** Wet Pour



**Finding:** There are falls in excess of 600mm between adjacent components on the structure, in contravention of the recommendations set out in BS EN 1176 Part 1; 4.2.8.4  
**Action:** Monitor - No remedial work recommended

**i** 5 - Very Low Risk (Finding 11)

**Item:** Activity Equipment - Multi Play (Toddler)  
**Manufacturer:** Playdale Playgrounds Ltd

**Risk Level:** V - Very Low Risk  
**Surface:** Wet Pour



**Finding:** The connecting links are in excess of 8.6mm and less than 12mm and fail the requirements of BS EN 1176 Part 1; clause 4.2.13, Chains

**Action:** Monitor use and replace with compliant links at the next maintenance cycle

**i** 8 - Low Risk (Finding 12)

**Item:** Activity Equipment - Multi Play (Toddler)  
**Manufacturer:** Playdale Playgrounds Ltd

**Risk Level:** L - Low Risk  
**Surface:** Wet Pour



**Finding:** There are areas or parts of the timber on the structure that have rotted

**Action:** Replace all affected timbers

**i** 6 - Low Risk (Finding 13)

**Item:** Activity Equipment - Multi Play (Toddler)  
**Manufacturer:** Playdale Playgrounds Ltd

**Risk Level:** L - Low Risk  
**Surface:** Wet Pour



**Finding:** A number of fixing(s) have worked loose

**Action:** Secure all loose fixings

**i** 6 - Low Risk (Finding 14)

**Item:** Activity Equipment - Multi Play (Toddler)  
**Manufacturer:** Playdale Playgrounds Ltd

**Risk Level:** L - Low Risk  
**Surface:** Wet Pour



**Finding:** There is some evidence of rot in the timber

**Action:** Monitor for any further deterioration and replace as required

**6 - Low Risk (Finding 15)**

**Item:** Activity Equipment - Multi Play (Toddler)  
**Manufacturer:** Playdale Playgrounds Ltd

**Risk Level:** L - Low Risk  
**Surface:** Wet Pour



**Finding:** There are gaps in excess of 30mm in the direction of travel creating foot entrapment/s in contravention of BS EN 1176 Part 1 in the bridge  
**Action:** Monitor - no remedial action recommended

**8 - Low Risk (Finding 16)**

**Item:** Activity Equipment - Multi Play (Toddler)  
**Manufacturer:** Playdale Playgrounds Ltd

**Risk Level:** L - Low Risk  
**Surface:** Wet Pour



**Finding:** A number of fixing(s) have worked loose  
**Action:** Secure all loose fixings

**i** 8 - Low Risk (Finding 17)

**Item:** Activity Equipment - Multi Play (Toddler)  
**Manufacturer:** Playdale Playgrounds Ltd

**Risk Level:** L - Low Risk  
**Surface:** Wet Pour



**Finding:** A barrier has been replaced and there are metal brackets remaining creating sharp edges

**Action:** Remove brackets

**i** 6 - Low Risk (Finding 1)

**Item:** Rocking Equipment - Spring Horse  
**Manufacturer:** Ledon

**Risk Level:** L - Low Risk  
**Surface:** Rubber Tiles



**Finding:** The end of handgrips and/or footrests have a cross section of less than 15cm<sup>2</sup> and fail to meet the requirements of BS EN 1176 Part 6

**Action:** Monitor - No remedial work recommended

**i** 4 - Very Low Risk (Finding 2)

**Item:** Rocking Equipment - Spring Horse  
**Manufacturer:** Ledon  
**Risk Level:** V - Very Low Risk  
**Surface:** Rubber Tiles



**Finding:** There is some minor damage to the surface  
**Action:** Monitor for any further deterioration and repair as required

**i** 6 - Low Risk (Finding 3)

**Item:** Rocking Equipment - Spring Horse  
**Manufacturer:** Ledon  
**Risk Level:** L - Low Risk  
**Surface:** Rubber Tiles



**Finding:** The paintwork on the spring has been damaged or worn exposing the metal underneath which is rusting  
**Action:** Treat any rusting components and repaint

**i** 8 - Low Risk (Finding 4)

**Item:** Rocking Equipment - Spring Horse  
**Manufacturer:** Ledon

**Risk Level:** L - Low Risk  
**Surface:** Rubber Tiles



**Finding:** The U bolts clamping the spring are worn

**Action:** Replace

**i** 6 - Low Risk (Finding 5)

**Item:** Rocking Equipment - Spring Horse  
**Manufacturer:** Ledon

**Risk Level:** L - Low Risk  
**Surface:** Rubber Tiles



**Finding:** The end caps are missing on the Handgrips/Footrests

**Action:** Replace missing end caps



**i** 6 - Low Risk (Finding 1)

**Item:** Rocking Equipment - Spring Bird  
**Manufacturer:** Ledon

**Risk Level:** L - Low Risk  
**Surface:** Rubber Tiles



**Finding:** The end of handgrips and/or footrests have a cross section of less than 15cm<sup>2</sup> and fail to meet the requirements of BS EN 1176 Part 6  
**Action:** Monitor - No remedial work recommended

**i** 4 - Very Low Risk (Finding 2)

**Item:** Rocking Equipment - Spring Bird  
**Manufacturer:** Ledon

**Risk Level:** V - Very Low Risk  
**Surface:** Rubber Tiles



**Finding:** The U bolts clamping the spring are worn

**Action:** Monitor for any further deterioration and replace as required

**i** 6 - Low Risk (Finding 3)

**Item:** Rocking Equipment - Spring Bird  
**Manufacturer:** Ledon

**Risk Level:** L - Low Risk  
**Surface:** Rubber Tiles



**Finding:** The paintwork on the spring has been damaged or worn exposing the metal underneath which is rusting  
**Action:** Treat any rusting components and repaint

**i** 6 - Low Risk (Finding 4)

**Item:** Rocking Equipment - Spring Bird  
**Manufacturer:** Ledon

**Risk Level:** L - Low Risk  
**Surface:** Rubber Tiles



**Finding:** There is some damage to the item

**Action:** Monitor for any further deterioration and repair as required

**i** 6 - Low Risk (Finding 1)

**Item:** Activity Equipment - Multi Play (Junior)  
**Manufacturer:** Playdale Playgrounds Ltd

**Risk Level:** L - Low Risk  
**Surface:** Wet Pour



**Finding:** The timber has a number of splits/shakes or air cracks and this may affect the stability or allow water ingress which will accelerate the rotting process

**Action:** Monitor to ensure the splits do not cross through fixing points of the structure and/or cause any instability

**i** 8 - Low Risk (Finding 2)

**Item:** Activity Equipment - Multi Play (Junior)  
**Manufacturer:** Playdale Playgrounds Ltd

**Risk Level:** L - Low Risk  
**Surface:** Wet Pour



**Finding:** There is algae or moss on the surface of the equipment

**Action:** Clean and treat appropriately

**i** 6 - Low Risk (Finding 3)

**Item:** Activity Equipment - Multi Play (Junior)  
**Manufacturer:** Playdale Playgrounds Ltd

**Risk Level:** L - Low Risk  
**Surface:** Wet Pour



**Finding:** A number of net connector fixing(s) have worked loose

**Action:** Secure all loose fixings

**i** 8 - Low Risk (Finding 4)

**Item:** Activity Equipment - Multi Play (Junior)  
**Manufacturer:** Playdale Playgrounds Ltd

**Risk Level:** L - Low Risk  
**Surface:** Wet Pour



**Finding:** There are falls in excess of 600mm between adjacent components on the structure, in contravention of the recommendations set out in BS EN 1176 Part 1; 4.2.8.4

**Action:** Monitor - No remedial work recommended

**i** 9 - Low Risk (Finding 5)

**Item:** Activity Equipment - Multi Play (Junior)  
**Manufacturer:** Playdale Playgrounds Ltd

**Risk Level:** L - Low Risk  
**Surface:** Wet Pour



**Finding:** The rope has worn and wire strands are exposed

**Action:** Replace rope or net

**i** 0 - Risk Assessment not Undertaken (Finding 6)

**Item:** Activity Equipment - Multi Play (Junior)  
**Manufacturer:** Playdale Playgrounds Ltd

**Risk Level:** N - Risk Assessment not Undertaken  
**Surface:** Wet Pour



**Finding:** The ropes on this item have been taped and we are unable to fully assess the condition of the rope, ensure no wire strands are broken beneath the tape

**Action:** Repair or replace as required

**i** 4 - Very Low Risk (Finding 7)

**Item:** Activity Equipment - Multi Play (Junior)  
**Manufacturer:** Playdale Playgrounds Ltd

**Risk Level:** V - Very Low Risk  
**Surface:** Wet Pour



**Finding:** There is/are bolt cap covers missing or damaged on the item

**Action:** Replace missing or damaged bolt cap covers

**i** 6 - Low Risk (Finding 8)

**Item:** Activity Equipment - Multi Play (Junior)  
**Manufacturer:** Playdale Playgrounds Ltd

**Risk Level:** L - Low Risk  
**Surface:** Wet Pour



**Finding:** A number of fixing(s) have worked loose

**Action:** Secure all loose fixings

**i** 8 - Low Risk (Finding 9)

**Item:** Activity Equipment - Multi Play (Junior)  
**Manufacturer:** Playdale Playgrounds Ltd

**Risk Level:** L - Low Risk  
**Surface:** Wet Pour



**Finding:** The wet pour has been repaired with bitmac which forms a hard object within the impact area

**Action:** Replace with a appropriate safer surface

**i** 8 - Low Risk (Finding 10)

**Item:** Activity Equipment - Multi Play (Junior)  
**Manufacturer:** Playdale Playgrounds Ltd

**Risk Level:** L - Low Risk  
**Surface:** Wet Pour



**Finding:** The surface is lifting at the edges and creating trip points

**Action:** Repair perimeter of surfacing to remove trip points

**i** 8 - Low Risk (Finding 11)

**Item:** Activity Equipment - Multi Play (Junior)  
**Manufacturer:** Playdale Playgrounds Ltd

**Risk Level:** L - Low Risk  
**Surface:** Wet Pour



**Finding:** There are areas or parts of the timber on the structure that have rotted

**Action:** Replace all affected timbers



 12 - Moderate Risk (Finding 12)

**Item:** Activity Equipment - Multi Play (Junior)  
**Manufacturer:** Playdale Playgrounds Ltd

**Risk Level:** M - Moderate Risk  
**Surface:** Wet Pour



**Finding:** There are areas or parts of the timber on the structure that have rotted

**Action:** Replace all affected timbers

**i** 0 - Risk Assessment not Undertaken (Finding 13)

**Item:** Activity Equipment - Multi Play (Junior)  
**Manufacturer:** Playdale Playgrounds Ltd

**Risk Level:** N - Risk Assessment not Undertaken  
**Surface:** Wet Pour



**Finding:** The inspector has some concerns about the internal condition of the timber and was unable to verify the structural integrity without further testing. We recommend a Resi-PD survey to establish the condition of the timber at it's core.

**Action:** Contact the Play Inspection Company office for further information

**i** 6 - Low Risk (Finding 14)

**Item:** Activity Equipment - Multi Play (Junior)  
**Manufacturer:** Playdale Playgrounds Ltd

**Risk Level:** L - Low Risk  
**Surface:** Wet Pour



**Finding:** The net connections are corroding

**Action:** Monitor for any further deterioration and replace as required

**i** 4 - Very Low Risk (Finding 15)

**Item:** Activity Equipment - Multi Play (Junior)  
**Manufacturer:** Playdale Playgrounds Ltd

**Risk Level:** V - Very Low Risk  
**Surface:** Wet Pour



**Finding:** There are a number of dents in the slide surface

**Action:** Monitor for any further deterioration and repair as required

**i** 6 - Low Risk (Finding 16)

**Item:** Activity Equipment - Multi Play (Junior)  
**Manufacturer:** Playdale Playgrounds Ltd

**Risk Level:** L - Low Risk  
**Surface:** Wet Pour



**Finding:** Parts of the timber are rough or splintered

**Action:** Remove all rough or sharp edges

**i** 0 - Risk Assessment not Undertaken (Finding 17)

**Item:** Activity Equipment - Multi Play (Junior)  
**Manufacturer:** Playdale Playgrounds Ltd

**Risk Level:** N - Risk Assessment not Undertaken  
**Surface:** Wet Pour



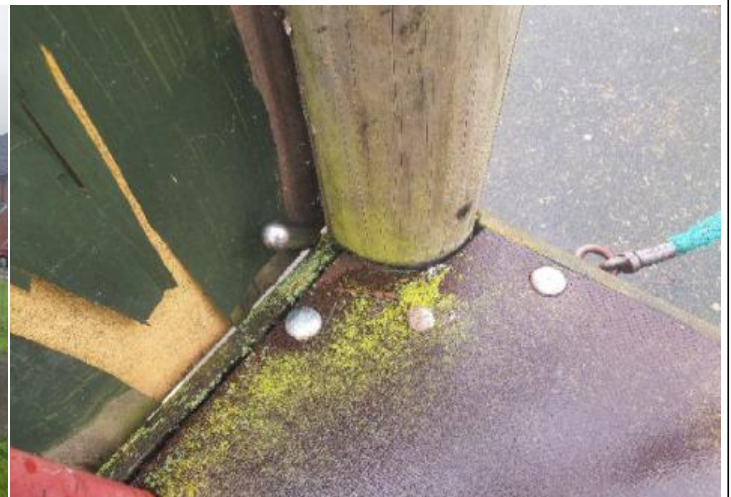
**Finding:** There is offensive graffiti present

**Action:** Remove as soon as practicable

**i** 5 - Very Low Risk (Finding 18)

**Item:** Activity Equipment - Multi Play (Junior)  
**Manufacturer:** Playdale Playgrounds Ltd

**Risk Level:** V - Very Low Risk  
**Surface:** Wet Pour



**Finding:** There is/are finger entrapment/s in the platform and the item fails to meet the requirements of BS EN 1176 Part 1 4.2.7.6 Entrapment of fingers

**Action:** Monitor - No remedial work recommended

**i** 6 - Low Risk (Finding 19)

**Item:** Activity Equipment - Multi Play (Junior)  
**Manufacturer:** Playdale Playgrounds Ltd

**Risk Level:** L - Low Risk  
**Surface:** Wet Pour



**Finding:** The plywood has delaminated in some places

**Action:** Remove all rough or splintered edges.

**i** 6 - Low Risk (Finding 20)

**Item:** Activity Equipment - Multi Play (Junior)  
**Manufacturer:** Playdale Playgrounds Ltd

**Risk Level:** L - Low Risk  
**Surface:** Wet Pour



**Finding:** There are gaps opening between the surfacing and the edging surround or between the joints in the surfacing

**Action:** Monitor for any further deterioration and repair as required

**i** 8 - Low Risk (Finding 21)

**Item:** Activity Equipment - Multi Play (Junior)  
**Manufacturer:** Playdale Playgrounds Ltd

**Risk Level:** L - Low Risk  
**Surface:** Wet Pour



**Finding:** There are projecting bolt thread(s) present

**Action:** Remove excess thread length and deburr or provide cap

**i** 5 - Very Low Risk (Finding 22)

**Item:** Activity Equipment - Multi Play (Junior)  
**Manufacturer:** Playdale Playgrounds Ltd

**Risk Level:** V - Very Low Risk  
**Surface:** Wet Pour



**Finding:** There is/are finger entrapment/s in the barrier due to missing fixings and the item fails to meet the requirements of BS EN 1176 Part 1 4.2.7.6 Entrapment of fingers

**Action:** Provide missing fixings to remove entrapment

**i** 6 - Low Risk (Finding 23)

**Item:** Activity Equipment - Multi Play (Junior)  
**Manufacturer:** Playdale Playgrounds Ltd

**Risk Level:** L - Low Risk  
**Surface:** Wet Pour



**Finding:** A number of fixing(s) have worked loose

**Action:** Secure all loose fixings

**i** 6 - Low Risk (Finding 24)

**Item:** Activity Equipment - Multi Play (Junior)  
**Manufacturer:** Playdale Playgrounds Ltd

**Risk Level:** L - Low Risk  
**Surface:** Wet Pour



**Finding:** There is some evidence of rot in the timber

**Action:** Monitor for any further deterioration and replace as required

**!** 12 - Moderate Risk (Finding 25)

**Item:** Activity Equipment - Multi Play (Junior)  
**Manufacturer:** Playdale Playgrounds Ltd

**Risk Level:** M - Moderate Risk  
**Surface:** Wet Pour



**Finding:** The tower is becoming unstable

**Action:** Repair or replace as required

**i** 8 - Low Risk (Finding 26)

**Item:** Activity Equipment - Multi Play (Junior)  
**Manufacturer:** Playdale Playgrounds Ltd

**Risk Level:** L - Low Risk  
**Surface:** Wet Pour



**Finding:** The fixings have corroded excessively

**Action:** Replace all corroded fixings



**i** 6 - Low Risk (Finding 27)

**Item:** Activity Equipment - Multi Play (Junior)  
**Manufacturer:** Playdale Playgrounds Ltd

**Risk Level:** L - Low Risk  
**Surface:** Wet Pour



**Finding:** There is some damage to the item

**Action:** Monitor for any further deterioration and repair as required

**!** 12 - Moderate Risk (Finding 1)

**Item:** Swings - 1 Bay 2 Seat (Flat)  
**Manufacturer:** Playdale Playgrounds Ltd

**Risk Level:** M - Moderate Risk  
**Surface:** Wet Pour



**Finding:** There are areas or parts of the timber on the structure that have rotted (Risk assessment has been lowered due to there being no swings attached)

**Action:** Replace all affected timbers before re hanging swings

**i** 6 - Low Risk (Finding 2)

**Item:** Swings - 1 Bay 2 Seat (Flat)  
**Manufacturer:** Playdale Playgrounds Ltd

**Risk Level:** L - Low Risk  
**Surface:** Wet Pour



**Finding:** There is some strimmer / machinery damage apparent on the posts, this can penetrate the preservative applied to the timber and accelerate the rotting process

**Action:** Monitor for any deterioration (rot) and replace as required

**i** 6 - Low Risk (Finding 3)

**Item:** Swings - 1 Bay 2 Seat (Flat)  
**Manufacturer:** Playdale Playgrounds Ltd

**Risk Level:** L - Low Risk  
**Surface:** Wet Pour



**Finding:** The timber has a number of splits/shakes or air cracks and this may affect the stability or allow water ingress which will accelerate the rotting process

**Action:** Monitor to ensure the splits do not cross through fixing points of the structure and/or cause any instability

**i** 6 - Low Risk (Finding 4)

**Item:** Swings - 1 Bay 2 Seat (Flat)  
**Manufacturer:** Playdale Playgrounds Ltd

**Risk Level:** L - Low Risk  
**Surface:** Wet Pour



**Finding:** There are a number of redundant staples attached to the equipment  
**Action:** Remove redundant staples

**i** 8 - Low Risk (Finding 5)

**Item:** Swings - 1 Bay 2 Seat (Flat)  
**Manufacturer:** Playdale Playgrounds Ltd

**Risk Level:** L - Low Risk  
**Surface:** Wet Pour



**Finding:** The surface is lifting at the edges and creating trip points  
**Action:** Repair perimeter of surfacing to remove trip points

**i** 0 - Risk Assessment not Undertaken (Finding 6)

<b>Item:</b>	Swings - 1 Bay 2 Seat (Flat)	<b>Risk Level:</b>	N - Risk Assessment not Undertaken
<b>Manufacturer:</b>	Playdale Playgrounds Ltd	<b>Surface:</b>	Wet Pour



**Finding:** There is some graffiti present

**Action:** Remove the graffiti

**i** 6 - Low Risk (Finding 7)

<b>Item:</b>	Swings - 1 Bay 2 Seat (Flat)	<b>Risk Level:</b>	L - Low Risk
<b>Manufacturer:</b>	Playdale Playgrounds Ltd	<b>Surface:</b>	Wet Pour



**Finding:** Parts of the timber are rough or splintered

**Action:** Remove all rough or sharp edges

**i** 6 - Low Risk (Finding 8)

**Item:** Swings - 1 Bay 2 Seat (Flat)  
**Manufacturer:** Playdale Playgrounds Ltd

**Risk Level:** L - Low Risk  
**Surface:** Wet Pour



**Finding:** There is some evidence of rot in the timber

**Action:** Monitor for any further deterioration and replace as required

**i** 4 - Very Low Risk (Finding 9)

**Item:** Swings - 1 Bay 2 Seat (Flat)  
**Manufacturer:** Playdale Playgrounds Ltd

**Risk Level:** V - Very Low Risk  
**Surface:** Wet Pour



**Finding:** There is some minor damage to the surface

**Action:** Monitor for any further deterioration and repair as required

**i** 0 - Risk Assessment not Undertaken (Finding 10)

**Item:** Swings - 1 Bay 2 Seat (Flat)  
**Manufacturer:** Playdale Playgrounds Ltd

**Risk Level:** N - Risk Assessment not Undertaken  
**Surface:** Wet Pour



**Finding:** The seat(s) and suspension were missing at the time of inspection and the inspector was unable to make a full compliance assessment

**Action:** Replace missing seat(s) and suspension